



Province of the
EASTERN CAPE
EDUCATION

LEFAPHA LA THUTO LA KAPA BOTJHABELA

KEREITI YA 9

PUDUNGWANA 2011

SESOTHO BUKA YA MOITHUTI

MATSHWAO: 100

NAKO: DIHORA TSE 2½

Pampiri ena e na le maqephe a 11.

DITAELO HO MOHLAHLOBUWA

1. Mosebetsi ona o arotswe ka dikoto tse Nne

MOSEBETSI WA A
MOSEBETSI WA B
MOSEBETSI WA C
MOSEBETSI WA D

2. Bala ditaelo TSOHLE ka hloko.
3. Araba dipotso TSOHLE.
4. Qala karolo e NNGWE le e NNGWE Leqepheng le LETJHA.
5. Seha mola qetellong ya karolo e nngwe le e nngwe
6. Nomora dikarabo tsa hao jwalo feela ka ha dipotso di nomorilwe pampiring ya dipotso.
7. Tlola mola dipakeng tsa dikarabo tsa hao.
8. Ngola ka mongolo o makgethe mme o balehang.
9. Tsepamisa maikutlo haholo mopeletong le popong ya dipolelo tse nepahetseng.
10. Dipotso TSOHLE di arajwe ka Sesotho.

MOSEBETSI WA A**POTSO 1 (A)**

Araba dipotso kaofela

Bala tema e latelang o nto oraba dipotso tsohle tse hlahang tlasa yona.

Ho tloha ke le dilemo di pedi feela, ntate o ne a dutse a tsamaya le nna ha a ile boitokisetsong ba ho papadi, mme ke kgothatso eo ya hae e entseng hore ke hate mehlaleng ya hae.

Leha a ne a sa rate, empa haesale a nkema nokeng dinthong tse ngata tseo ke di etsang. Re utlwana haholo mme jwale nka bolela hore ke motswalle wa ka wa hlooho ya kgomo. leha re sa dule mmoho, empa re qoqa ka matsatsi ohle re qoqa le ka tsohle. Ke a motshepa; o dutse a nkeletsa, ntle feela ho tsa marato he-empa ke hobane ke sa bue ka tsona ho yena. Ho tse ding tsohle ke tshepela ho yena. O na le kutlwisiso le moya o motle. Ke yena eo e reng ha di kgitla lejwe bophelong, a mpontshe tsela. Ka boiphihlelo boo a nang lebona kalaneng, o kgona ho nthusa le hona hontlafatsa bonono ba ka. O bile molaodi paleng tseo ke di ngotseng mme hape re kile ra siyelana sebaya. Ke kgona le ho lla ho yena ka bolokolohi ntle le hore a nkahlolele kapa a re, 'monna ke nku, ha lle'.

Seo a se etsang ke ho ntshedisa, a mpontshe tsela e yang pele. Ntate o nthutile ho ithlompha le ho hlompha batho ba bang mona bophelong, ho se rate dintho esitana le ho ba le botho. O mphile lefa leo ke tlang ho le fetisetsa le baneng ba ka. Ho feta tsohle, ntate o nthutile hore diketso di bua hofeta mantswe a molomo. Lepetjo la hae ke le reng 'se ka bua haholo, empa sebetsa 'mme he le nna ke etsa jwalo. Kajeno ke bona ditholwana tsa ho sebetsa ha ka ka thata. Ke matla a ka. Ke kopa basa utlwaneng le bontate ba bona ba leke ho lokisa dintho le bona, Nako e sa dumela.

[E qotsitswe ho “Bona” ya Sesotho ya Phuptjane 2011]

DIPOTSO

- 1.1 Mohlankana eo ho buuwang ka yena o qadile ho tsamaya le Ntatae a le dilemo di kae? (1)
- 1.2 Hlalosa hore batho bana ba babedi ban e ba kopanngwa ke eng ha kana, ntle le ho ba motho le mora wa hae? (2)
- 1.3 Mohlankana enwa o re ntatae o na le moya o motle key a jwang? (2)
- 1.4 Ntle le ho ba ntatae ba amana jwang? (1)
- 1.5 Ke se fe se o a sa buwang ka sona le ntatae? (1)
- 1.6 Mohlankana o re ntatae o na le moya o motle. Motho a nang le moya o motle ke ya jwang? (2)
- 1.7 Hlalosa hore ha di kgitla lejwe bophelong ke ha ho le jwang? (2)

- 1.8 Qotsa maele a buwang ka nku seratswaneng. (2)
- 1.9 Mohlankana o re ntatae o mo ratile hlomphe. ho ya ka wena na e be hlomphe ke ntho ya bohlokwa? hobaneng? (2)
- 1.10 Seratswana se ka hodimo se qotsitswe kae? (1)
- 1.11 Seratswaneng sena ho na le lentswe "tshedisa" hana motho o tshediswa ha ho le jwang? (2)
- 1.12 Hana lefa leo batswadi ba rona ba re fang lona le sa boleng ke lefe? E be bana baya le ananela kapa ba bona e le tshenyo ya nako feela. (Tshehetsa karabo ya hao) (2)
- 1.13 Ho bolelwang ha hothwe diketso di bua ho feta mantswe a molomo? (2)
- 1.14 Na ho bohlokwa ho sebetsa ka thata? Hobaneng? (3)

[25]

MOSEBETSI WA B: PAPATSO

TSA MARIHA

Johnson's
baby
Experts in Infant Skincare

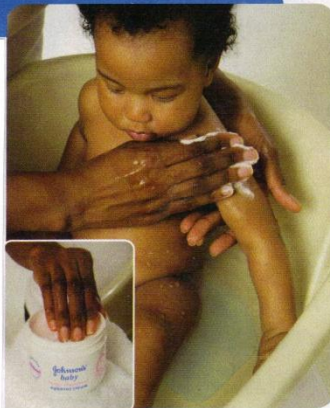
Boloka letlalo la lesea le le bonolo,
boreledi le phetse hantle mariheng ana.



Hobaneng o hloka ho hlokomela letlalo
la lesea ka hloko mariha?

Serame le moya wa mariha di omeletsa
letlalo. Jwalo ka ha letlalo la lesea la hao le
le bobejana ho feta la motho e moholo, le
lahlehelwa ke mongobo ka pele, mme he le
hloka tlhokomelo e ikgethang haholo nakong
ena ya mariha.

MOHATO 1



MOHATO 2

TSA MARIHA
Johnson's baby

Boloka letlalo la lesea le le bonolo, boreledi le phetse hantle mariheng ana.

Hobaneng o hloka ho hlokomela letlalo

la lesea ka hloko mariha?

Serame le moya wa mariha di omeletsa letlalo.

Jwalo ka ha letlalo la lesea la hao le le bobejana ho feta la motho e moholo, le lahlehelwa ke mongobo ka pele, mme he le hloka tlhokomelo e ikgethang haholo nakong ena ya mariha.

MOHATO 1

[LE HLAPISE KA HLOKO]

- Tshela marathodi a mmalwa a **JOHNSON'S® Baby Oil** ka bateng ya ho hlapisa lesea, ho nolofatsa metsi.
- Hlapisa lesea ka **JOHNSON's® Baby Soap**. ho boloka letlalo la lona le le boreledi hape le le bonolo.
- Haeba letlalo la lesea le omella le thothofala, le hlapise ka **JOHNSON'S® Baby Aqueous Cream**. Motswako o reberebe o tlosa tshila ha o o poditsa ka metsi mme o siye letlalo la lesea le le boreletsana le phetse hantle.

MOHATO 2

[BOLOKA MONGOBO]

-Boloka mongobo le mofuthu letlalong la lesea Ka **JOHNSON's® Baby Jelly**, bonojwana mme e tshaseha ha bobebe ho boloka letlalo la lesea le le bonojwana le bolokehile.

Diitlolo tse hlokahalang tsa mariha



JOHNSON'S® BABY JELLY

JOHNSON'S® Baby Jelly e se e fumaneha ka botlolo e kgolo e sa bitseng ya 500ml le e nyane ya 50ml e ka fellang hantle ka mokotleng wa maleiri.



JOHNSON'S® MOISTURISING LOTION

Ha o rata mokedikedi o bobebe, leka JOHNSON'S® Baby Moisturising Lotion. E entswe diteko, e bobebe mme he e monyeha ha bobebe ho boloka letlalo le le mongobo dihora tse 24.



JOHNSON'S® BABY OIL

JOHNSON'S® Baby Oil e na le bokgoni ba ho etsa mongobo le ho etsa letlalo le hahle ka tlhaho ntle le ho kwala masobana mme hape e kwalla mongobo o phetilweng makgetlo a 10.



Johnson's baby Warm up winter

Win 1 of 5 Solar Powered Geyser Systems worth R20 000 each!

Purchase any specially marked JOHNSON'S® Baby pack and SMS your unique code and BABY to 33755

Johnson's baby Trusted by mothers for generations.

If you don't have running water you will receive the equivalent cash value. Competition opens 1 June 2011. Closes 31 August 2011. Terms and conditions apply. Competition rules available at www.johnsonsbaby.co.za/rules

©Trademark © Johnson & Johnson (Pty) Ltd 2011. Bakeng sa tlhahisoleseding ka dihlahiswa, letsetsa 0860 410 032

JOHNSON'S® Baby Jelly
e se e fumaneha ka
botlolo

Ha o rata mokedikedi o
bobebe,
leka JOHNSON'S® Baby

JOHNSON'S® Baby Oil
e na le bokgoni ba ho etsa
mongobo le hoetsa

e kgolo e sa bitseng
ya 500ml le e nyane ya
50ml e ka fellang hantle

ka mokotleng wa
maleiri.

Moisturising Lotion. E entswe
diteko, e bobebe mme he e
monyeha ha bobebe ho
boloka
letlalo le le mongobo dihora
tse 24.

letlalo le hahle ka tlhaho
ntle le ho kwala masobana
mme hape e kwalla
mongobo o phetilweng
Makgetlo a 10.

Sebedisa setswantsho se ka hodimo ho araba dipotso tse latelang
[E qotsitswe ho "Bona" ya Phuptjane 2011]

POTSO 2(A)

- 2.1 Setshwantshong se ka hodimo ho phatlaladitsweng? (2)
- 2.2 Ke batho bafe ba ka thabelang ho reka se phatlaladitsweng? (1)
- 2.3 Ka tsebo ya hao ke mmala o fe o amahangwang le bashanyana? (2)
- 2.4 Bohlokwa ba botlolo e nyane ke bofe? (2)

- 2.5 Ke hobaneng ha letlalo la ngwana le le bobejana ho feta la motho e moholo? (2)
- 2.6 Fana ka lebitsohohle le hlahellang seratswaneng sa pele le bontshang nako ya selemo. (1)
- 2.7 Ngola malatodi a mantswe a latelang:-
- (a) Nolofatsa (1)
 - (b) Nyane (1)
 - (c) Mmalwa (1)
 - (d) Bobebe (1)
- 2.8 Wena ditlolong tse tharo tse hlahisitsweng o rata sefe (Hobaneng). (2)
- 2.9 Bontsha phetoho ya modumo ya lebitso le nyenyefaditsweng-**Bonojwana** (1)
- 2.10 Sebedisa lebitso **leka** dipolelong tse pedi tse fapaneng ho bontsha meelelo emmedi e fapaneng. (2)
- 2.11 Lekgethi ke eng? (1)
- 2.12 Ngola mahlalosonngwe a mabitso a latelang.
- (a) Fumaneha (1)
 - (b) Diteko (1)
 - (c) Tshaseha (1)
- 2.13 Lentswe **hantle** ke mofuta ofe wa lehlalosi. (1)
- 2.14 Bolela hore lebitso **letlalo** ke la sehlopha sefe. (1)

[25]**POTSO 2(B)**

Fana ka ditlhaloso tsa maele a latelang:

- (a) E mafi ha e itswale (2)
- (b) Bohlale ha bo ahe ntlong e lenngwe (2)
- (c) Tlalo la motho ha le thakgiswe fatshe (2)
- (d) Raka le shwetswe ke molebo (2)
- (e) Hlaahlela le lla ka le leng (2)

[10]

MOSEBETSI WA C**POTSO 3 THOTHOKISO**

Bala thothokiso e latelang o nto araba dipotso tse tla latela.

Mme

1. La hae lerato le a hlolla,
2. Ruri ke la botswadi sebele,
3. Ruri o le bontshitse ho tloha boseeng,
4. Ruri la hae ha le fele.

5. Masiu o qetile a dikete, a sa bo hlothe,
6. A hlobaetswa ke nna seana la hae,
7. Empa ngongoreho e le siyo,
8. Hoba la hae lerato le a kgaphatseha.

9. Kgodiso ya hae, e bile e babatsehang,
10. Hoba o nkgodiseditse tumelong,
11. A mpeha mohaung le paballong ya Ramasedi,
12. A nkabela yena ka sebele.

13. Thuto o mphile yona a sa qeaqee..,
14. A tela tsohle bakeng sa yona,
15. Ruri a sala a ithophere,
16. Ruri la hae lerato ha le fele.

17. Diteboho tsa ka ho yena, ke tse kgolo,
18. Ruri ke tse sitang ho lekanngwa.
19. Hoba o nkgodisitse ho tloha lehlakeng.
20. Ho fihlela la ka kajeno.

DIPOTSO 3 THOTHOKISO

- 3.1. Ke molaetsa ofe oo thothokiso ee e fanang ka ona? (2)
- 3.2. Thothokisong ee, mongodi o leboha mang? (1)
- 3.3. Hobaneng eo a lebohuwa? (2)
- 3.5. Kgodiso ya mongodi e bile jwang? (1)
- 3.6. Moleng wa bohloano hothwe "masiu o qetile a dikete, a sa bo hlothe," (Hlalosa se bolelwang ke polelo ena). (2)
- 3.7. Hlalosa lebitso ngongoreho. (2)
- 3.8. Seratswaneng sa bobedi qolla lentswe le renekeditsweng. (1)
- 3.9. Ka mela e mehlano hlalosa se bolelwang ke seratswana sa boraro. (4)

3.10. Ha hothwe o hodisitswe ho tloha lehlakeng ho bolelwa eng? (2)

3.11. Ngola mantswe a bontshang phetamola thothokisong o satswa e bala. (1)

[20]

MOSEBETSI WA D: HO NGOLA.

POTSO 4 PUISANO



My gogo always says, "Precious, what's the best sugar in the whole of South Africa?" and I just smile and say, "The sweetest one!"

- Precious, keen baker

People recognise Hulett's by its pure white crystals that dissolve quickly for instant sweetness. No wonder it's South Africa's favourite!

For more information go to www.hulettssugar.co.za

Pure Sugar - Pure Sweetness

POTSO 4A

Shebisisa setshwantsho se ka hodimo mme o ngole puisano e pakeng tsa batho ba bararo ba hlahellang setshwantshong. Ba rehe mabitso. Mme mokotaba o be ka seo ba se etsang. Bolelele bo se fete mantswe a 100-120.

[10]**POTSO 4B**

Barutwana ba kereiti ya borobong (9) bat la ba le mokete wa ditumediso ka kgwedi ya Mphalane. Memela motswalle wa hao moketeng oo.

[10]**MATSHWAO KAOFELA: 100**