



Province of the  
**EASTERN CAPE**  
EDUCATION

**NATIONAL  
SENIOR CERTIFICATE**

**GRADE 11**

**NOVEMBER 2013**

**MUSIC P1**

Name: \_\_\_\_\_

**MARKS: 120**

**TIME: 3 hours**

---

This question paper consists of 24 pages, including a rough work page,  
which also serves as an answer book.

---

**INSTRUCTIONS AND INFORMATION**

1. This question paper consists of FOUR sections, namely SECTIONS A to D.
2. Answer SECTION A in pencil only in the spaces provided on this question paper.
3. Answer SECTIONS B, C and D in blue or black ink in the spaces provided on this question paper.
4. The last page of this question paper is manuscript paper intended for rough work.
5. You may not have access to any musical instrument for the duration of the examination.
6. Write neatly and legibly.
7. Write your NAME in the space provided on the cover page of this ANSWER BOOK.

**SECTION A: THEORY OF MUSIC**

Answer **QUESTIONS 1, 2.1 OR 2.2, 3 and 4.1 OR 4.2.**

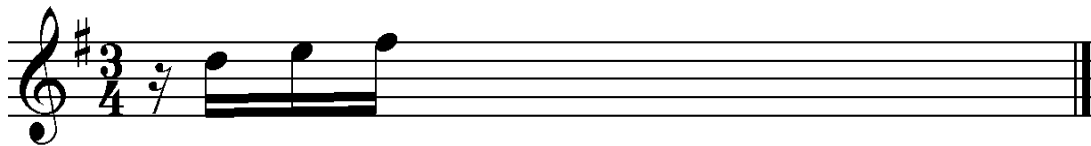
**QUESTION 1**

1.1 Prefix time signatures to the following examples where there are asterisks.



(2)

1.2 Complete the following bar with notes correctly grouped, to form a melody in 3/4 time.



(2)

1.3 Name the circled note:



**Answer:** \_\_\_\_\_

(1)

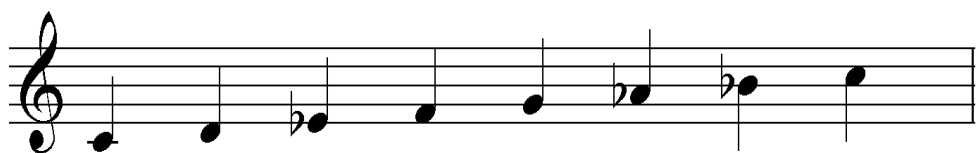
1.4 Write a one-octave F# harmonic minor scale (descending and ascending) to the given rhythm. Use a key signature.



(3)

1.5 Identify the following modes/scales:

1.5.1



**Answer:** \_\_\_\_\_

(1)

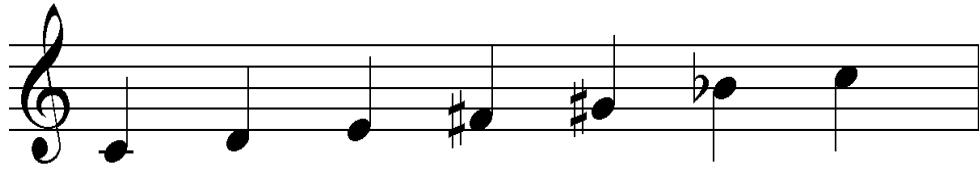
1.5.2



Answer: \_\_\_\_\_

(1)

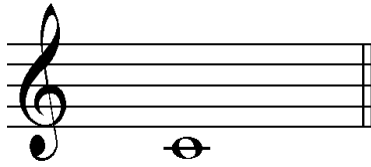
1.5.3



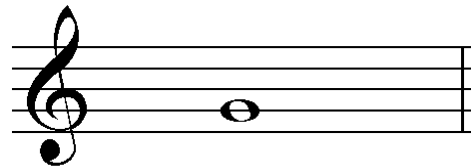
Answer: \_\_\_\_\_

(1)

1.6 Create the named interval by placing the correct pitch above the tonic:



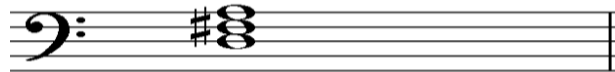
Minor 3<sup>rd</sup>



Perfect 5<sup>th</sup>

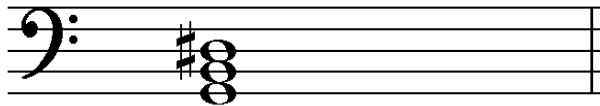
(2)

1.7 Name the root and quality of each chord, for example, C augmented:



Answer: \_\_\_\_\_

(1)



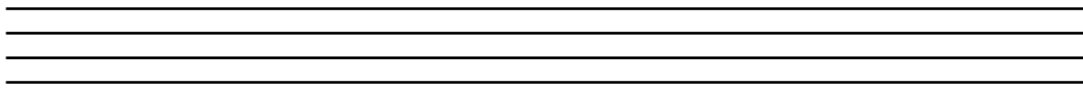
Answer: \_\_\_\_\_

(1)

1.8 Transcribe the following passage to the tenor clef. Do not change the pitch.



Answer:



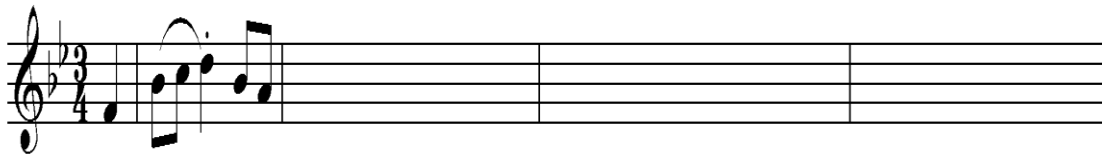
(5)  
[20]

**ANSWER EITHER QUESTION 2.1 OR QUESTION 2.2.**

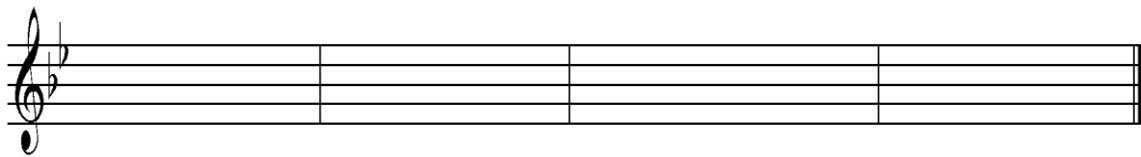
**QUESTION 2**

2.1 Use the opening motif below and complete an eight-bar melody in AB form for the instrument of your choice. Indicate the instrument for which you are writing and add dynamic and articulation marks.

**Instrument:** \_\_\_\_\_



5

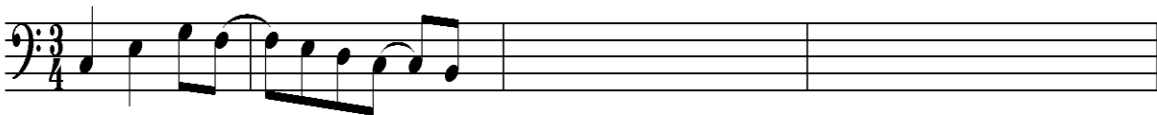


(15)

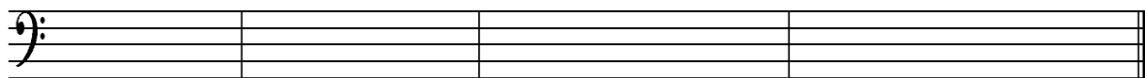
**OR**

2.2 Use the opening motif below and complete an eight-bar melody in AB form for the instrument of your choice. Indicate the instrument for which you are writing and add dynamic and articulation marks.

**Instrument:** \_\_\_\_\_



5



(15)  
[15]

## QUESTION 3

3.1 Study the following piece and answer the questions that follow.

**Allegro moderato** Czerny

5

9

13

3.1 In which key is this piece?

**Answer:** \_\_\_\_\_ (1)

3.2 Name the note(s) that do not belong to the key of this piece.

**Answer:** \_\_\_\_\_ (1)

3.3 Write an appropriate Roman numeral below the minim chord in bar 6.

**Answer:** Answer on the piece. (1)

3.4 Write appropriate Roman numerals below the chords in bars 1 and 5.

**Answer:** Answer on the piece. (2)

3.5 Name the cadence in bar 16.

**Answer:** \_\_\_\_\_ (1)

3.6 Name TWO bars that move in similar motion (treble part).

**Answer:** \_\_\_\_\_ (1)

3.7 Bracket () a one-octave scale that starts and finishes on the dominant of the home key. (1)

3.8 What is the meaning of *Allegro moderato*?

**Answer:** \_\_\_\_\_ (1)

3.9 What is the meaning of the sign that appears at the end of bar 8 and 16?

**Answer:** \_\_\_\_\_ (1)

**[10]**

## QUESTION 4

## ANSWER EITHER QUESTION 4.1 OR QUESTION 4.2.

- 4.1 Complete the four-part vocal harmonisation below by adding the alto, tenor and bass parts.

5

(15)

OR

- 4.2 Complete *Blues in C*, by filling in the empty bars. Ensure that you continue in the style of the extract.

## BLUES IN C

Slowly (♩ = ♩<sup>3</sup>)C<sup>7</sup>

7

(15)  
[15]

TOTAL SECTION A: 60



**SECTION B: GENERAL MUSICAL KNOWLEDGE**

Answer the questions in this section in the spaces provided on the question paper.

**QUESTION 5: (COMPULSORY)**

Various options are provided as possible answers to the following questions. Choose the answer and write only the letter (A–E) next to the question number (5.1–5.10) in the block provided.

5.1 Which ONE of the following exercises is NOT technical work?

- A Scales
- B Arpeggios
- C Broken chords
- D Rhythmic patterns
- E Chronicler

(1)

5.2 Which ONE of the following terms is NOT used to qualify/describe a triad?

- A Augmented
- B Diminution
- C Major
- D Minor
- E Diminished

(1)

5.3 Which ONE of the following techniques is NOT a compositional technique?

- A Sequence
- B Imitation
- C Repetition
- D Inversions
- E Rhythmic motives

(1)

5.4 Choose the musical definition of *ma non troppo*:

- A But not too much
- B Unaccompanied vocal piece
- C Gradually faster
- D German dance in 4/4 time
- E Go on at once

(1)

5.5 Which instrument from the following list is part of the aerophone family?

- A Drums
- B Xylophone
- C Trumpet
- D Guitar
- E Violin

(1)

5.6 Which ONE of the following instruments is NOT part of a Boeremusiek band?

- A Concertina
- B Piano
- C Guitar
- D Accordion
- E Sitar

(1)

5.7 Which ONE of the following terms is NOT referring to a musical dynamic?

- A *Legato*
- B *Diminuendo*
- C *Crescendo*
- D *Forte*
- E *Piano*

(1)

5.8 Which term in the following list is NOT referring to tempo?

- A *Mosso*
- B *Lento*
- C *Langsam*
- D *Anacrusis*
- E *Presto*

(1)

5.9 Which term in the following list is NOT articulation?

- A *Staccato*
- B *Ritardando*
- C *Accent*
- D *Portato*
- E *Tenuto*

(1)

5.10 Choose the term that does NOT belong to forms of music.

- A Binary form
- B Ternary form
- C Sonata form
- D *Rondo*
- E *Adagio*

(1)

**[10]**

ANSWER EITHER QUESTION 6.1 OR QUESTION 6.2 AND THEN QUESTION 6.3.

**QUESTION 6: MUSICAL THEATRE, ROCK AND POP, AND MODERN CONSTRUCTS**

**WESTERN ART MUSIC AND JAZZ**

**6.1 MUSICAL THEATRE**

6.1.1 Write a paragraph on *West Side Story* by Leonard Bernstein, with special reference to *Maria*.

---

---

---

---

---

---

---

---

---

---

(3)

6.1.2 Write a paragraph on *My Fair Lady* by Lerner and Loewe, focusing on the song, *The Rain in Spain*.

---

---

---

---

---

---

---

---

(2)

**OR**

**INDIGENOUS AFRICAN MUSIC**

**6.2 MUSICAL THEATRE**

Write a paragraph on ONE of the following Modern constructs.

- *Umabatha* – Welcome Msomi
- *Ipintombi*
- *Sarafina*
- *Umoja*
- *African Footprints* – Richard Loring

Modern construct: \_\_\_\_\_

---



---



---



---



---



---



---



---



---



---



---



---



---



---



---



---



---



---



---



---



---



---

(5)

OR

6.3 ROCK AND POP (COMPULSORY)

In an international music festival that will be held in Cape Town, you have been invited to be a programme director. Choose ONE of the following Artists or group and write a short historical overview, you will present such an overview to the audience before the performance:

- David Bowie
- Seal
- Spice Girls
- Westlife
- Boys II Men
- Salt and Pepper
- Metallica
- Michael Jackson
- Prince
- U2
- Salif Keita
- Hugh Masekela
- Mano Debango
- Fela Kuti
- Mirriam Makeba
- Phillip Tabane
- Jonas Gwangwa
- Letta Mbulu
- Angelique Kidjo
- Baba Maahl
- Oliver Mtukudzi
- Thomas Mapfumo
- Khaja Nin
- Caiphus Semanya

Chosen artist: \_\_\_\_\_

---

---

---

---

---

---

---

---

---

---

---

---

---

---

---

---

---

---

---

---

---

---

---

(5)  
[5]

**SECTION C**

**IN SECTION C, ANSWER ONE OF THE FOLLOWING:**

- **WESTERN ART MUSIC (QUESTION 7 AND 8)**
- **JAZZ (QUESTION 9 AND 10)**
- **INDIGENOUS AFRICAN MUSIC (QUESTION 11, 12 AND 13)**

**WESTERN ART MUSIC**

**QUESTION 7**

Choose TWO of the following Romantic compositions and name style characteristics of each.

- |   |                          |
|---|--------------------------|
| <i>Der Erlkönig</i>                               | <i>Franz Schubert</i>    |
| <i>Polonaise in A flat major, Op. 53</i>          | <i>Frédéric Chopin</i>   |
| <i>Violin Concerto in E minor, first movement</i> | <i>Felix Mendelssohn</i> |
| <i>Romeo and Juliet ballet suite</i>              | <i>Tchaikovsky</i>       |

**Romantic composition 1:** \_\_\_\_\_

---

---

---

---

---

---

---

---

---

---

(8)

**Romantic composition 2:** \_\_\_\_\_

---

---

---

---

---

---

---

---

---

---

(8)  
**[16]**

**AND**

**QUESTION 8**

**The Twentieth Century**

**8.1 Claude Debussy: *Voiles***

8.1.1 Which scale does Claude Debussy use to suggest the gentle rocking of sails in the wind?

**Answer:** \_\_\_\_\_ (1)

8.1.2 Which scale is used for rapid upward rushes in the animated middle section?

**Answer:** \_\_\_\_\_ (1)

8.1.3 Describe the *dynamics*, *tempo* and *rhythm* of *Voiles*.

**Dynamics:**

\_\_\_\_\_  
\_\_\_\_\_  
\_\_\_\_\_ (1)

**Tempo:**

\_\_\_\_\_  
\_\_\_\_\_  
\_\_\_\_\_ (1)

**Rhythm:**

\_\_\_\_\_  
\_\_\_\_\_  
\_\_\_\_\_ (1)

8.2 **Stravinsky: *The Rite of Spring***

Describe the melodies of *The Rite of Spring*.

---

---

---

---

---

---

---

---

---

---

(3)

8.3 **George Gershwin: *Rhapsody in Blue***

Write short notes on the jazz elements used in *Rhapsody in Blue* by George Gershwin.

---

---

---

---

---

---

---

---

---

---

---

---

---

---

---

---

---

---

---

---

---

---

---

---

(6)  
[14]

OR



**JAZZ**

**QUESTION 9**

Choose TWO of the following genres and name style characteristics of each.

- Modal Jazz
- Cool Jazz
- Hard-Bop
- Bebop

**Genre choice 1:** \_\_\_\_\_

---

---

---

---

---

---

---

---

---

---

---

---

---

---

---

---

---

---

---

---

---

(8)

**Genre choice 2:** \_\_\_\_\_

---

---

---

---

---

---

---

---

---

---

---

---

---

---

---

---

---

---

---

---

---

(8)  
[16]

**AND**

**QUESTION 10****10.1 Ornette Coleman – Free Jazz**

Write a paragraph on the features of Free Jazz.

---

---

---

---

---

---

---

(5)

**10.2 Miles Davis – Bitches Brew**

10.2.1 When was *Bitches Brew* released?

**Answer:** \_\_\_\_\_

(1)

10.2.2 Which instruments does Miles Davis use in *Bitches Brew*?

**Answer:** \_\_\_\_\_

(2)

10.2.3 Describe the rhythm used in *Bitches Brew*.

---

---

(2)

**10.3 Pat Metheny**

Describe Metheny's tone on a six-string electric guitar.

---

---

---

---

---

---

---

(4)

**[14]****OR**

**QUESTION 11**

**INDIGENOUS AFRICAN MUSIC**

11.1 Define TWO of the following traditional dances:

- 11.1.1 Indlamu
- 11.1.2 Tshikombela
- 11.1.3 Tshikona
- 11.1.4 Kiba
- 11.1.5 Famo

(8)

**Traditional dance 1:** \_\_\_\_\_

---

---

---

---

---

---

---

---

---

---

---

---

(4)

**AND**

**Traditional dance 2:** \_\_\_\_\_

---

---

---

---

---

---

---

---

---

---

---

---

(4)  
**[8]**

**AND**

**QUESTION 12**

Define the following terms:

12.1 A Taboo

---

---

(2)

12.2 Onomatopoeia

---

---

(2)

12.3 Ululation

---

---

(2)

12.4 Crepitation

---

---

(2)

12.5 Phoneaesthetics

---

---

(2)  
**[10]**

**AND**

**QUESTION 13**

Name style characteristics of the following Indigenous African Music Experts.

- Mama Madosini
- Princess Magogo

Mama Madosini:

---



---



---



---



---



---



---



---



---



---

(6)

**AND**

Princess Magogo:

---



---



---



---



---



---



---



---



---



---

(6)  
**[12]**

**TOTAL SECTION C: 30**

**SECTION D**

Candidates specialising in **WESTERN ART MUSIC** must answer **QUESTIONS 15 AND 16.**

Candidates specialising in **JAZZ** must answer **QUESTIONS 14 AND 16.**

Candidates specialising in **INDIGENOUS AFRICAN MUSIC** must answer **QUESTIONS 14 AND 15.**

**QUESTION 14: OVERVIEW OF WESTERN ART MUSIC**

Choose a description/definition from COLUMN B and match with its relevant musical term/genre/style in COLUMN A. Write only the letter (A–E) in the space provided on this question paper, for example 14.6 F.

COLUMN A (MUSICAL TERM/GENRE/STYLE)		COLUMN B (DESCRIPTION)	
14.1	Concerto	A	Consists of various sections: exposition, development and recapitulation
14.2	Sonata form	B	Consists of Violin 1, Violin 2, Viola and Cello
14.3	Romantic Period	C	More than one melody used simultaneously
14.4	String quartet	D	A large-scale work for solo instrument and orchestra
14.5	Polyphony	E	The period between approximately 1820 and 1900

**ANSWERS:**

14.1 \_\_\_\_\_ (1)      14.2 \_\_\_\_\_ (1)      14.3 \_\_\_\_\_ (1)  
 14.4 \_\_\_\_\_ (1)      14.5 \_\_\_\_\_ (1)      **[5]**

**QUESTION 15: OVERVIEW OF JAZZ**

Choose a description/definition from COLUMN B and match with its relevant musical term/genre/style in COLUMN A. Write only the letter (A–E) in the space provided on this question paper, for example, for example 15.6 F.

COLUMN A (MUSICAL TERM/GENRE/STYLE)		COLUMN B (DESCRIPTION)	
15.1	Syncopation	A	A type of piano music and is generally performed at a march-like tempo
15.2	Ragtime	B	The accentuation of the weak beats in a bar
15.3	12-bar Blues	C	The piano, drum kit and double bass of the jazz orchestra
15.4	Rhythm section	D	A type of jazz that follows a fixed pattern of three four-bar phrases, with the chords I, IV, V
15.5	Improvisation	E	Creating music spontaneously

**ANSWERS:**

15.1 \_\_\_\_\_ (1)      15.2 \_\_\_\_\_ (1)      15.3 \_\_\_\_\_ (1)  
 15.4 \_\_\_\_\_ (1)      15.5 \_\_\_\_\_ (1)      **[5]**

**QUESTION 16: OVERVIEW OF INDIGENOUS AFRICAN MUSIC**

Choose a description/definition from COLUMN B and match with its relevant musical term/genre/style in COLUMN A. Write only the letter (A–E) in the space provided on this question paper, for example 16.6 F.

COLUMN A (MUSICAL TERM/GENRE/STYLE)		COLUMN B (DESCRIPTION)	
16.1	Polyrhythm	A	A long wavering high-pitched vocal sound with a trilling quality made with the rapid movement of the tongue
16.2	Call and response	B	A singing style in which a soloist sings a phrase to which the chorus responds with an answering phrase
16.3	Ululation	C	A fundamental tone is sung and a high melody is created above this fundamental tone by amplifying the overtones
16.4	Uhadi bow	D	The combination of two or more distinctly different and often conflicting rhythmic patterns played simultaneously
16.5	Overtone singing	E	A single string gourd bow that produces a low humming sound

**ANSWERS:**

16.1 \_\_\_\_\_ (1)      16.2 \_\_\_\_\_ (1)      16.3 \_\_\_\_\_ (1)  
 16.4 \_\_\_\_\_ (1)      16.5 \_\_\_\_\_ (1)      [5]

**TOTAL SECTION D: 10**  
**GRAND TOTAL: 120**

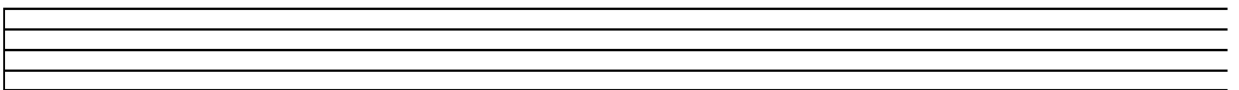
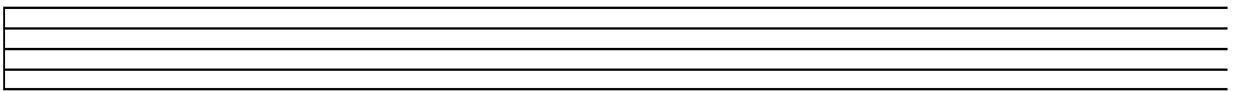
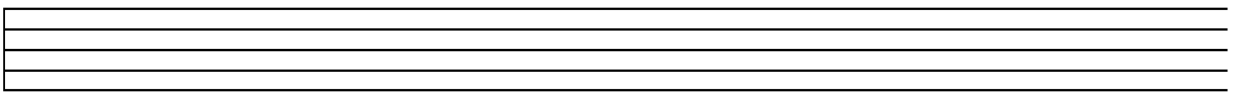
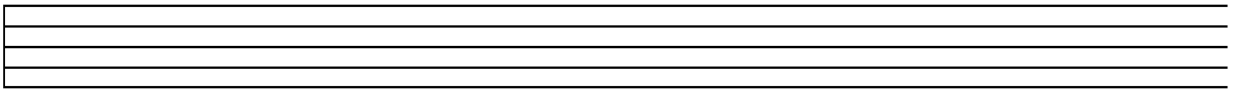
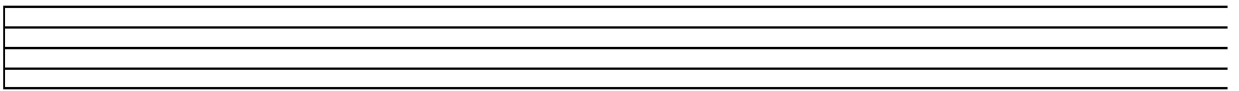
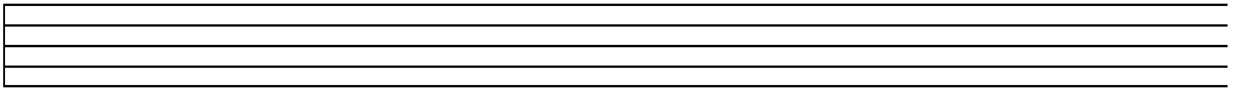
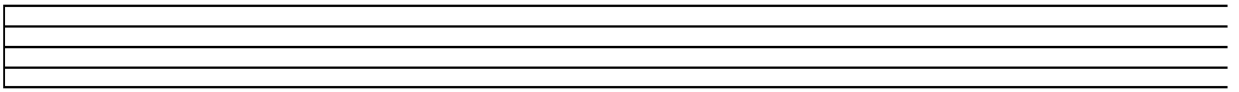
**ROUGH WORK:**









ROFWERK:

**VRAAG 16: OORSIG VAN INHEEMSE AFRIKAMUSIEK**

Kies 'n beskrywing/definisie uit KOLOM B en pas dit met die relevante musiekterme/genre/styl in KOLOM A. Skryf slegs die letter (A–E) in die gegewe ruimte op die vraestel, byvoorbeeld 16.6 F.

KOLOM A (MUSIEK TERME/GENRE/STYL)		KOLOM B (BESKRYWING)	
16.1	Poliritmiek	A	'n Lang goftagtige hoë vokale klanke met 'n trillende kwaliteit gemaak met die vinnige beweging van die tong
16.2	Roep en antwoord	B	'n Sangstyl waarin 'n solis 'n frase sing waarna die koor met 'n antwoordtrase reageer
16.3	Ululase	C	'n Fundamentele toon word gesing en 'n hoë melodie word bo hierdie fundamentele toon gesing deur die botone aan te vul
16.4	Uhad! boog	D	Die kombinasie van twee of meer duidelik verskillende en dikwels strydende ritmiese patrone wat gelyktydig gespeel word
16.5	Botoon-sang	E	'n Enkel string kalbas-boog wat 'n lae brom geluid maak

**ANTWOORDE:**

16.1	_____	(1)	16.2	_____	(1)
16.4	_____	(1)	16.5	_____	(1)

**TOTAAL AFDELING C: 10**  
**GROOTTOTAAL: 120**

[5]

(1)

## AFDELING D

Kandidate wat in WESTERSE KUNSMUSIEK spesialiseer, moet VRAE 15 EN 16 beantwoord.  
 Kandidate wat in JAZZ spesialiseer moet VRAE 14 EN 16 beantwoord.  
 Kandidate wat in INHEEMSE AFRIKAMUSIEK spesialiseer moet VRAE 14 EN 15 beantwoord.

## VRAAG 14: OORSIG VAN WESTERSE KUNSMUSIEK

Kies 'n beskrywing/definisie uit KOLOM B en pas dit met die relevante musiekterme/gene/styl in KOLOM A. Skryf slegs die letter (A–E) in die gegewe ruimte op die vraestel, byvoorbeeld 14.6 F.

KOLOM A (MUSIEK TERME/GENRE/STYL)		KOLOM B (BESKRYWING)	
14.1	Concerto	A	Bestaan uit verskeie afdelings: eksposisie, ontwikkeling, terugkeer
14.2	Sonata-vorm	B	Bestaan uit Viol 1, Viol 2, Altviool en Tjello
14.3	Romantiese tydperk	C	Meer as een melodie wat gelyktydig gebruik word
14.4	Strykkwartet	D	'n Grootsewerk vir solo instrument en orkes
14.5	Polifonie	E	Die tydperk tussen 1820 en 1900

## ANTWOORDE:

14.1 \_\_\_\_\_ (1) 14.2 \_\_\_\_\_ (1) 14.3 \_\_\_\_\_ (1)  
 14.4 \_\_\_\_\_ (1) 14.5 \_\_\_\_\_ (1)

[5]

## VRAAG 15: OORSIG VAN JAZZ

Kies 'n beskrywing/definisie uit KOLOM B en pas dit met die relevante musiekterme/gene/styl in KOLOM A. Skryf slegs die letter (A–E) in die gegewe ruimte op die vraestel, byvoorbeeld 15.6 F.

KOLOM A (MUSIEK TERME/GENRE/STYL)		KOLOM B (BESKRYWING)	
15.1	Sinkopasie	A	'n Tipe klaviermusiek wat gewoonlik teen 'n mars-tempo gespeel word
15.2	Ragtime	B	Die beklemtoning van die tussenmaatstae in 'n maat
15.3	12-maat Blues	C	Die klavier, tromstel en kontrabas van die jazz-orkes
15.4	Ritme afdeling	D	'n Tipe jazz wat 'n vasgestelde patroon van drie vier-maat frases met die akkoorde I, IV, V volg
15.5	Improvisasie	E	Musiek wat spontaan geskep word

## ANTWOORDE:

15.1 \_\_\_\_\_ (1) 15.2 \_\_\_\_\_ (1) 15.3 \_\_\_\_\_ (1)  
 15.4 \_\_\_\_\_ (1) 15.5 \_\_\_\_\_ (1)

[5]



**VRAAG 12**

Definieer die volgende terme:

12.1 'n Taboe

---

---

(2)

12.2 Onomatopoeia

---

---

(2)

12.3 Ululasie

---

---

(2)

12.4 Krepitasies

---

---

(2)

12.5 Fonestetika

---

---

[10]  
(2)

EN

**VRAAG 11**

**INHEEMSE AFRIKAMUSIEK**

11.1 Definieer TWEE van die volgende tradisionele danse:

- 11.1.1 Indlamu
- 11.1.2 Tshikombela
- 11.1.3 Tshikona
- 11.1.4 Kiba
- 11.1.5 Famo

Tradisionele dans 1: \_\_\_\_\_

---

---

---

---

---

---

---

---

---

---

(4)

EN

Tradisionele dans 2: \_\_\_\_\_

---

---

---

---

---

---

---

---

---

---

[8]  
(4)

EN

## VRAAG 10

10.1 Ornette Coleman – Free Jazz

Skryf 'n paragraaf oor die eienskappe van 'Free Jazz'.

---



---



---



---



---



---

(5)

10.2 Miles Davis – *Bitches Brew*10.2.1 Wanneer is *Bitches Brew* vrygestel?

Antwoord: \_\_\_\_\_

(1)

10.2.2 Watter instrumente gebruik Miles Davis in *Bitches Brew*?

Antwoord: \_\_\_\_\_

(2)

10.2.3 Beskryf die ritme wat in *Bitches Brew* gebruik word.

---



---

(2)

10.3 Pat Metheny

Beskryf Metheny se toonkleur op 'n ses-string elektriese kitaar.

---



---



---



---



---



---

(4)

[14]

OF







**VRAAG 8**

**Die Twintigste Eeu**

**8.1 Claude Debussy: *Voiles***

8.1.1 Watter toonleer gebruik Claude Debussy om die rustige beweging van seile in die wind voor te stel?

**Antwoord:** \_\_\_\_\_ (1)

8.1.2 Watter toonleer word gebruik vir vinnig stygende passasies in die geanimeerde middelseksie?

**Antwoord:** \_\_\_\_\_ (1)

8.1.3 Beskryf die *dinamika*, *tempo* en *ritme* van *Voiles*.

**Dinamika:**

\_\_\_\_\_  
\_\_\_\_\_  
\_\_\_\_\_ (1)

**Tempo:**

\_\_\_\_\_  
\_\_\_\_\_  
\_\_\_\_\_ (1)

**Ritme:**

\_\_\_\_\_  
\_\_\_\_\_  
\_\_\_\_\_ (1)







**BEANTWOORD OF VRAAG 6.1 OF VRAAG 6.2 EN DAN VRAAG 6.3.**

**VRAAG 6: MUSIEKTEATER, ROCK EN POP, EN MODERNE KONSTRUKTE**

**WESTERSE KUNSMUSIEK EN JAZZ**

**6.1 MUSIEKTEATER**

6.1.1 Skryf 'n paragraaf oor *West Side Story* deur Leonard Bernstein, met spesiale verwysing na *Maria*.

---

---

---

---

---

---

---

---

(3)

6.1.2 Skryf 'n kort paragraaf oor *My Fair Lady* deur Lerner en Loewe, deur op liedjie *The Rain in Spain* te fokus.

---

---

---

---

---

---

---

---

(2)

**OF**

5.6 Watter EEN van die volgende instrumente vorm NIE deel van 'n Boeremusiekorkes NIE?

- A Konsertina
- B Klavier
- C Kitaar
- D Akkordeon
- E Sitar

(1)

5.7 Watter EEN van die volgende terme verwys NIE na 'n musiekdynamiek NIE?

- A Legato
- B Diminuendo
- C Crescendo
- D Forte
- E Piano

(1)

5.8 Watter terme uit die volgende lys verwys NIE na tempo NIE?

- A Mosso
- B Lento
- C Langsam
- D Anacrusis
- E Presto

(1)

5.9 Watter terme uit die volgende lys is NIE artikulasie NIE?

- A Staccato
- B Ritardando
- C Accent
- D Portato
- E Tenuito

(1)

5.10 Kies die term wat NIE aan die vorms van musiek behoort NIE.

- A Tweeledige vorm
- B Drieledige vorm
- C Sonate-vorm
- D Rondo
- E Adagio

[10]  
(1)

**AFDELING B: ALGEMENE MUSIEKKENIS**

Beantwoord die vrae in hierdie afdeling in die gegewe spasies wat op die vraestel voorsien is.

**VRAAG 5: (VERPLIGTEND)**

Verseke opsies word as moontlike antwoorde vir die volgende vrae gegee. Kies die antwoord en skryf slegs die letter (A–E) langs die vraagnummer (5.1–5.10) in die blokkie voorsien.

5.1 Watter EEN van die volgende oefeninge is NIE tegniese werk NIE?

- A Toonlere
- B Arpeggios
- C Gebroke akkoorde
- D Ritmiese patrone
- E Chronicier

(1)

5.2 Watter EEN van die volgende word NIE gebruik om 'n drieklanke kwalifiseer/beskryf NIE?

- A Vergrote
- B Diminuering
- C Majeur
- D Mineur
- E Verminderde

(1)

5.3 Watter EEN van die volgende tegnieke is NIE 'n komposisionele tegniek NIE?

- A Sekwens
- B Imitasie
- C Herhaling
- D Omkering
- E Ritmiese motiewe

(1)

5.4 Kies die musiekterme vir *ma non troppo*:

- A Maar nie te veel nie
- B Ongeleide sangstuk
- C Geleidelik vinniger
- D Duitse dans in 4/4 tyd
- E Beweg tesame

(1)

5.5 Watter instrument uit die volgende lys is deel van die aërofoonfamilie?

- A Tromme
- B Xilofoon
- C Trompet
- D Kitaaar
- E Viool

(1)



VRAAG 4

BEANTWOORD OF VRAAG 4.1 OF VRAAG 4.2.

4.1 Voltooi die vierstemmige vokale harmonisasie deur die alt, tenoor en bas-stemme by te voeg.

(15)

OF

4.2 Voltooi die *Blues in C*, deur die onvolledige mates in te vul. Maak seker dat jy in die styl van die uittreksel voortgaan.

BLUES IN C

Slowly (♩ = 3/8)

C7

du

(15)  
[15]

TOTAAL AFDELING A: 60

3.5 Noem die kadens in maat 16.

Antwoord: \_\_\_\_\_ (1)

3.6 Noem TWEE mate wat in gelyke beweging (diskant party) beweeg.

Antwoord: \_\_\_\_\_ (1)

3.7 Dui aan, deur hakies ( ) te gebruik, 'n een-oktaaf toonleer wat op die dominant van die hooftoonsoort begin en eindig.

(1)

3.8 Wat is die betekenis van *Allergro moderato*?

Antwoord: \_\_\_\_\_ (1)

3.9 Wat is die betekenis van die teken wat aan die einde van maat 8 en 16 voorkom?

Antwoord: \_\_\_\_\_ (1)

[10]

**VRAAG 3**

3.1 Bestudeer die volgende musiekstuk en beantwoord die vrae wat volg.

*Allegro moderato*

Czerny

This system of the musical score consists of two staves. The right-hand staff (treble clef) begins with a series of chords in the right hand, while the left hand (bass clef) plays a rhythmic accompaniment of eighth notes. The tempo is marked 'Allegro moderato'.

This system continues the musical piece. The right hand plays chords and the left hand continues with eighth-note accompaniment. The piece is in a key with two sharps (F# and C#).

This system shows the continuation of the musical piece. The right hand features chords and the left hand has eighth-note accompaniment. A dynamic marking of 'f' (forte) is present.

This system concludes the musical piece. The right hand plays chords and the left hand has eighth-note accompaniment. A dynamic marking of 'f' (forte) is present. The system ends with a double bar line and repeat dots.

3.1 In watter toonsoort is hierdie stuk?

Antwoord: \_\_\_\_\_ (1)

3.2 Noem die noot/note wat nie aan die toonsoort van hierdie stuk behoort nie.

Antwoord: \_\_\_\_\_ (1)

3.3 Skryf 'n gepaste Romeinse syfer onderaan die halfnoot-akkoord in maat 6.

Antwoord: Antwoord op die stuk. (1)

3.4 Skryf gepaste Romeinse syfers onder die akkoorde in mate 1 en 5.

Antwoord: Antwoord op die stuk. (2)

**BEANTWOORD OF VRAAG 2.1 OF VRAAG 2.2.**

**VRAAG 2**

2.1 Gebruik die onderstaande openingsmotief om 'n 8-maat melodie in AB-vorm te voltooi vir die instrument van jou keuse. Dui die instrument waarvoor jy skryf aan en voeg dinamika en artikulasietekens by.

Instrument: \_\_\_\_\_

(15)

**OF**

2.2 Gebruik die onderstaande openingsmotief om 'n 8-maat melodie in AB-vorm te voltooi vir die instrument van jou keuse. Dui die instrument waarvoor jy skryf aan en voeg dinamika en artikulasietekens by.

Instrument: \_\_\_\_\_

[15]  
(15)

1.5.2

(1)

Antwoord:

1.5.3

(1)

Antwoord:

1.6 Skep die genoemde intervale deur die korrekte toonhoogte boaan die tonika te skryf:

Minneur 3<sup>de</sup>

Volmaakte 5<sup>de</sup>

(2)

1.7

Noem die grondtoon en kwaliteit van elke akkoord, byvoorbeeld, C vergrote:

(1)

Antwoord:

(1)

Antwoord:

1.8

Transkribeer die volgende passasie in die tenoorleutel. Moenie die toonhoogte verander nie.

Antwoord:

[20]  
(5)

**AFDELING A: MUSIEKTEORIE**

Beantwoord VRAAG 1, 2.1 OF 2.2, 3 en 4.1 OF 4.2.

**VRAAG 1**

1.1 Voeg tydmattekens by die volgende uittrekels waar daar sterretjies is.

(2)

1.2 Voltooi die volgende maat met note wat korrek gegroepeer is om 'n melodie in drieslagmaat te vorm.

(2)

1.3 Noem die omringde noot:

(1)

1.4 Skryf 'n een-oktaaf F# harmoniese mineurtoonleer (dalend en stygend), met die volgende ritme. Gebruik 'n toonsoortteken.

1.5 Identifiseer die volgende modulus/toonlere:

(1)

Antwoord:

## INSTRUKSIES EN INLIGTING

1. Hierdie vraestel bestaan uit VIER afdelings, naamlik AFDELINGS A tot D. Beantwoord AFDELING A slegs in potlood in die spasies wat op die vraestel voorsien word.
3. Beantwoord AFDELINGS B, C en D in blou of swart ink in die spasies wat op die vraestel voorsien word.
4. Die laaste bladsy van hierdie vraestel bestaan uit manuskriptpapier wat vir rofwerk bedoel is.
5. Jy mag geen toegang tot 'n musiekinstrument gedurende die eksamen hê nie.
6. Skryf netjies en leesbaar.
7. Skryf jou NAAM in die spasie op die voorblad van hierdie ANTWOORDEBOEK.

Hierdie vraestel bestaan uit 24 bladsye, insluitende 'n rofwerkbladsy,  
wat ook dien as 'n antwoordboek.

TYD: 3 uur

PUNTE: 120

Naam: \_\_\_\_\_

**MUSIEK V1**

**NOVEMBER 2013**

**GRAAD 11**

**NASIONALE  
SENIOR SERTIFIKAAT**

