



Province of the
EASTERN CAPE
EDUCATION

**NATIONAL
SENIOR CERTIFICATE**

GRADE 12

SEPTEMBER 2013

CONSUMER STUDIES

MARKS: 200

TIME: 3 hours



This question paper consists of 15 pages including an answer sheet.

INSTRUCTIONS AND INFORMATION

1. This question paper consists of FIVE sections.

SECTION	MARKS	TIME (MINUTES)
A: Short questions	40	20
B: Food and Nutrition	40	40
C: Clothing	40	40
D: Housing and Household Equipment	40	40
E: Theory of Production and Entrepreneurship	40	40
TOTAL	200	180

2. All sections are **COMPULSORY**.
3. Answer **SECTION A** on the attached **ANSWER SHEET** and place it in your **ANSWER BOOK**.
4. Number the answers correctly according to the numbering system used in this question paper.
5. Start **EACH** question on a **NEW** page.
6. A calculator may be used.
7. Pay attention to spelling and sentence construction.
8. Write in blue or black ink only.
9. Write neatly and legibly.

SECTION A**QUESTION 1**

- 1.1 Various possible options are provided as answers to the following questions. Choose the answer and make a cross (X) in the block (A–D) next to the question number (1.1.1–1.1.21) on the ANSWER SHEET. NO MARKS will be awarded if more than ONE cross (X) appears for an answer.

EXAMPLE:

A	X	C	D
---	---	---	---

- 1.1.1 The consumer organisation below does not investigate complaints, but will refer consumers to the appropriate organisation or body:
- A South African Consumer Union
 - B National Consumer Forum
 - C Small Claims Court
 - D South African Bureau of Standards (1)
- 1.1.2 When a consumer is not satisfied with a product, who will be the first port of call?
- A The Small Claims Court
 - B A consumer organisation
 - C The place where the product was bought
 - D The manufacturer of the product (1)
- 1.1.3 When a consumer wants to complain about a food label, the following institution can be contacted:
- A South African Bureau of Standards
 - B Department of Health
 - C Competition Commission
 - D Press Ombudsman (1)
- 1.1.4 Which body collects taxes on behalf of the government?
- A National Consumer Forum
 - B Department of Finance
 - C South African Bureau of Standards
 - D South African Revenue Services (1)
- 1.1.5 Select the bread that is exempted from VAT.
- A Brown bread
 - B Seed bread
 - C White bread
 - D Whole-wheat bread (1)

- 1.1.6 A psychological disorder characterised by self-starvation, loss of appetite and extreme loss of weight is known as ...
- A HIV/Aids.
 - B anorexia nervosa.
 - C bulimia.
 - D osteoporosis.
- (1)
- 1.1.7 When suffering from anaemia, which nutrient is known to promote the absorption of dietary iron and can subsequently contribute to an improved iron status?
- A Vitamin A
 - B Vitamin B₁
 - C Vitamin C
 - D Vitamin D
- (1)
- 1.1.8 The best iron-rich food products that play a role in supplying iron are ...
- A oranges and guavas.
 - B liver and red meat.
 - C spinach and raisins.
 - D eggs and nuts.
- (1)
- 1.1.9 The following dietary guideline is the most important for people suffering from hypertension.
- A Make starchy foods the basis of most meals.
 - B Drink clean, safe water.
 - C Use sugar sparingly and not unnecessarily between meals.
 - D Use salt sparingly.
- (1)
- 1.1.10 Identify the foods that contain common allergens:
- A Bread, milk and nuts
 - B Soya, milk and eggs
 - C Bread, meat and eggs
 - D Rice, nuts and soya
- (2)
- 1.1.11 According to the new labelling legislation, it is compulsory that the following information appear on the label of a packet of biscuits.
1. Name and physical address of the manufacturer, importer or seller
 2. Instructions for use
 3. List of ingredients
 4. Instructions for storage
- A 1 and 2
 - B 1 and 3
 - C 2 and 4
 - D 3 and 4
- (2)

- 1.1.12 Clothes will go on sale during this phase of the fashion cycle.
- A Innovation
 - B Decline
 - C Peak
 - D Rise
- (1)
- 1.1.13 The term '*silhouette*' refers to ...
- A the outline of a garment.
 - B a new garment style that is worn by a few fashion leaders.
 - C individual differences in a style.
 - D the general direction that a fashion trend takes.
- (1)
- 1.1.14 Haute couture is when ...
- A fashion is extreme and is popular for a short time.
 - B fashion styles are elegant and remain popular for a long time.
 - C fashion is generally accepted by everybody.
 - D fashion styles are unique and worn by a small group of people.
- (1)
- 1.1.15 Do's for a professional look:
1. Any jewellery and accessories are acceptable.
 2. Wear only neutral colours.
 3. Clothes should fit well and comfortably.
 4. Have an overall groomed look.
 5. Wear only clothes according to the season.
- A 1 and 5
 - B 4 and 5
 - C 3 and 4
 - D 1 and 2
- (2)
- 1.1.16 Advantages of corporate clothing:
1. Reflect your individuality.
 2. A picture of yourself.
 3. A sense of self-worth.
 4. Project the image of the company.
 5. Send a positive message to the employee.
 6. Feel part of the workers.
- A 1, 3 and 5
 - B 2, 4 and 6
 - C 1, 2 and 3
 - D 4, 5 and 6
- (2)

- 1.1.17 Sectional title ...
- A comes into effect when a group of houses share a plot of land.
 - B is when one person owns the development.
 - C is a co-operative ownership.
 - D means that a person does not own the property. (1)
- 1.1.18 Select the combination of fees that needs to be paid towards the registration of a property into the buyer's name:
- 1. Conveyance fee
 - 2. Bond registration costs
 - 3. Inspection fee
 - 4. Transfer duty
 - 5. Deeds Office fees.
 - 6. Commission.
- A 1, 2 and 4
 - B 2, 3 and 6
 - C 1, 4 and 5
 - D 3, 5 and 6 (2)
- 1.1.19 When drawing up a contract for a builder, make sure you include the following:
- 1. Details of the house plan.
 - 2. Building specifications.
 - 3. Transfer fees.
 - 4. Completion date.
 - 5. Your qualifications for the home loan.
- A 1, 3 and 4
 - B 2, 3 and 4
 - C 1, 3 and 5
 - D 1, 2 and 4 (2)
- 1.1.20 The following principle is important in stock control and storage procedures:
- A Adhering to specifications.
 - B Economical use of human resources.
 - C First in, first out.
 - D Quality of packaging. (1)
- 1.1.21 The additional costs that a business has to pay in order to keep the business in operation is called ...
- A overheads.
 - B budgeting.
 - C capital expenses.
 - D costing. (1)

- 1.2 Choose a description from COLUMN B that matches a term in COLUMN A. Make a cross (X) in the block (A–F) next to the question number (1.2.1–1.2.5) on the attached ANSWER SHEET.

COLUMN A Tax		COLUMN B Description	
1.2.1	Pay As You Earn	A	Minimum income tax paid by employees earning up to R60 000,00 per year
1.2.2	Excise duty	B	Tax paid on the profit made when an asset is sold
1.2.3	Provisional Tax	C	Tax that is deducted by the employer when employees earn more than R60 000,00 per year
1.2.4	Estate Duty	D	Tax paid by people with income other than salaries
1.2.5	Capital Gains Tax	E	Tax levied on alcohol and tobacco products
		F	Tax payable after someone's death

(5 x 1)

(5)

- 1.3 Choose the correct word/term from the answer in brackets for each of the following descriptions. Write only the word/term next to the question number (1.3.1–1.3.4) on the attached ANSWER SHEET.

1.3.1 (Title Deeds/Deeds of Sale) is the legal document issued by the Registrar Deeds that proves that the buyer is now the legal owner of the property

1.3.2 (Transfer Duty/Deed of Transfer) is the government tax that is imposed on the property when the ownership of the property is transferred to the buyer

1.3.3 (Lease/Subsidy) is the agreement between the landlord and a tenant

1.3.4 (Transferring attorney/Bond attorney) is a qualified lawyer who conducts the process of transfer and the signing of all documents

(4 x 1)

(4)

1.4 Re-arrange the following steps in wardrobe planning in their correct sequence. Write the correct sequence of the steps listed below by using the letters (A–D) in the appropriate spaces on the answer sheet.

- A Examination of available resources
- B Evaluation of existing wardrobe inventory
- C Planning the working wardrobe
- D Needs analysis

(4 x 1) (4)

TOTAL SECTION A: 40

SECTION B: FOOD AND NUTRITION**QUESTION 2**

2.1 Read the following scenario and answer the questions that follow.

Sanchia is a 32-year-old and is feeling tired most of the time. She noticed that she is thirsty more often than usual and urinates more frequently. She lost a couple of kilograms over the past few months without trying to lose weight.

2.1.1 Identify the health-related condition. (2)

2.1.2 Explain why Sanchia is experiencing the symptoms mentioned in the scenario. (6)

2.1.3 Select the food from the following list that would be the best choice for a mid-morning snack for Sanchia. Explain the reason for your choice.

Food Sanchia can choose from:

- Bran muffin with low-fat cheese.
- Provita with low-fat cheese.
- Rye bread with low-fat cheese.
- White bread with low-fat cheese. (4)

2.2 Parmalat recently released 'EasyGest' a low fat, lactose free milk.



Would this milk be suitable for a person suffering from milk intolerance or a milk allergy? Explain your choice. (4)

- 2.3 Read the following extract from HIV/Aids and nutrition, published by *Health24*, on 29 May 2009 and answer the questions that follow.

Nutrition is an important health issue for everyone, but particularly for people living with HIV/Aids. Eating healthily and maintaining your proper weight strengthen the immune system, making it better able to slow the progression of HIV to Aids and fight opportunistic diseases.

- 2.3.1 What does the acronym Aids stand for? (2)

2.3.2 "Eating healthily and maintaining your proper weight strengthen the immune system."

- (a) List TWO anti-oxidant vitamins that play an important role to maintain a healthy immune system.
- (b) Give ONE example of a fruit that is a good source for each of these vitamins.

Tabulate your answer as follows:

	(a) Vitamins	(b) Fruit (Sources)
A		
B		

(2 x 2) (4)

- 2.4 Osteoporosis

- 2.4.1 Explain what 'osteoporosis' is and the effect it has on the body. (4)
- 2.4.2 Why does osteoporosis mainly affect the aged? (4)
- 2.4.3 List TWO minerals salts/elements that play an important function with osteoporosis. (2)

- 2.5 A young worker has a high blood cholesterol level. Propose a suitable high-fibre and low-fat packed lunch for him. Motivate the choice of FOUR items. (6)

TOTAL SECTION B: 40

SECTION C: CLOTHING

QUESTION 3

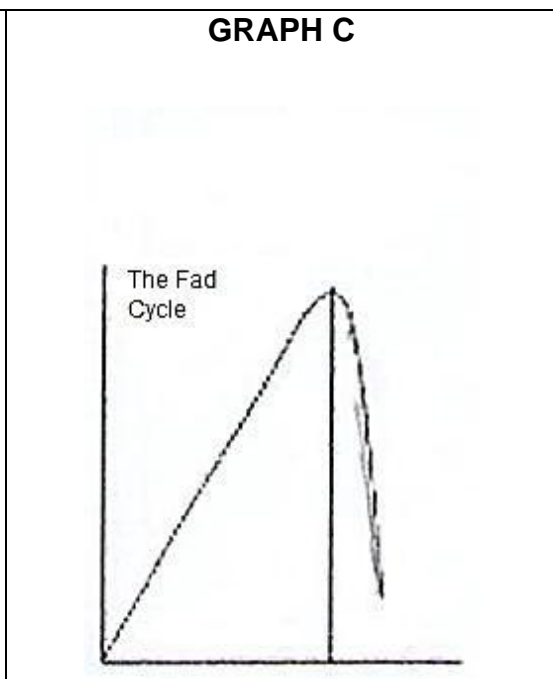
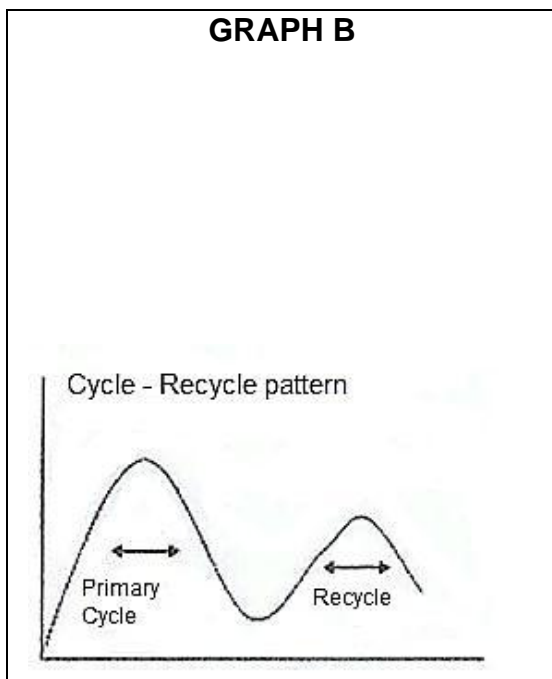
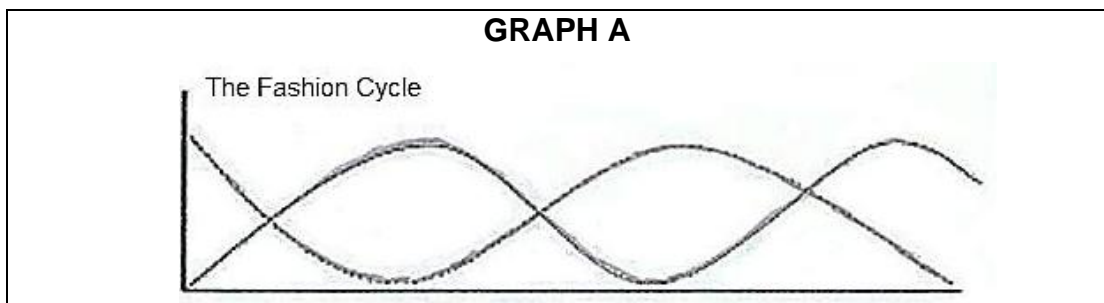
3.1 Explain the following terms:

3.1.1 *Fashion* (2)

3.1.2 *Style* (2)

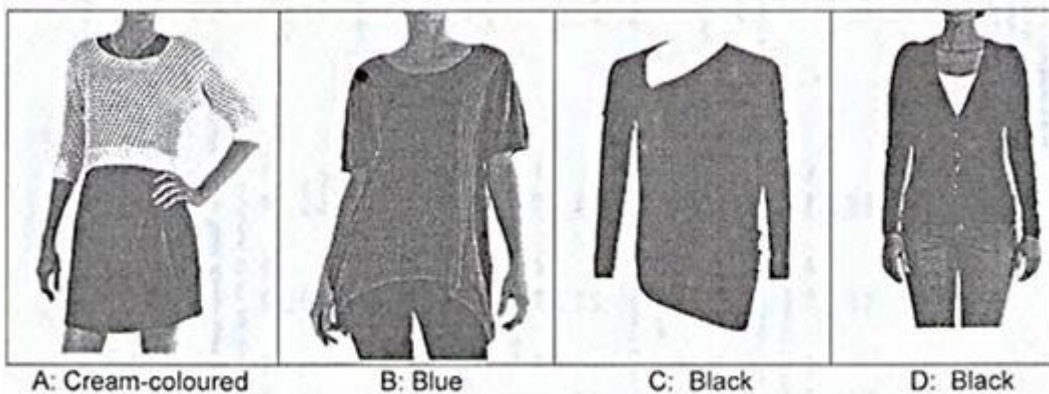
3.2 After Grade 12 you have to go for an interview for a white collar career. Describe giving reasons how/why you would need to dress in a certain way. (4)

3.3 Explain the meaning of each of the following graphs that represent fashion cycles.



(3 x 2) (6)

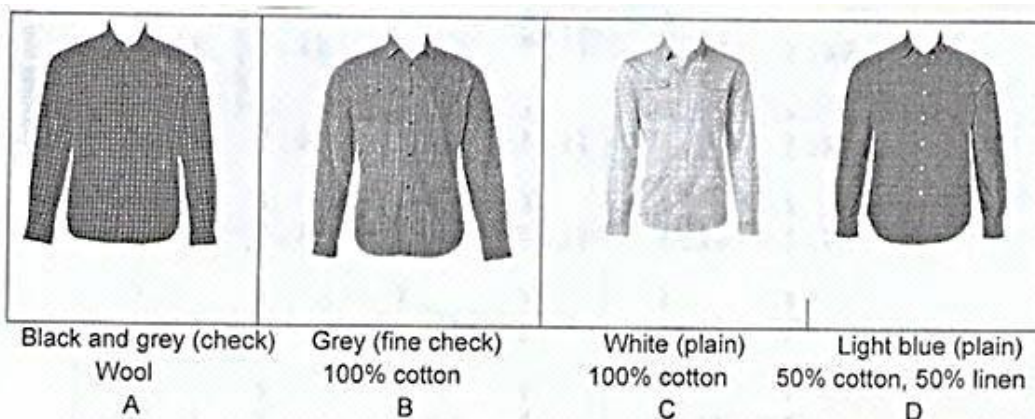
3.4 Study the FOUR pictures and answer the questions that follow.



3.4.1 Identify the most classic knitwear. Give THREE reasons for your choice. (4)

3.4.2 Select the knitwear that would be most suitable for a woman to wear to a formal, work-related function in the evening and give THREE reasons for your choice. (4)

3.5 Study the FOUR pictures below and answer the questions that follow.



3.5.1 Select the shirt that would be the best choice as one item for a basic wardrobe for a professional young male. Give THREE reasons for your choice. (4)

3.5.2 You have selected ONE shirt as an item for a basic working wardrobe for a professional young male in QUESTION 3.5.1. The young man has a pair of black shoes. Suggest FOUR other fundamental items for this man's wardrobe. The items must not be any of the shirts in the picture. (4)

3.6 Critically evaluate the following statement.

People with a good self-esteem may not feel the need to wear brand labels. (10)

TOTAL SECTION C: 40

SECTION D: HOUSING AND HOUSEHOLD EQUIPMENT

QUESTION 4

- 4.1 Explain the following terms:
 - 4.1.1 Mandate (2)
 - 4.1.2 Deeds Office fees (2)
- 4.2 “Location” is the advice of financial advisors and property experts alike. Motivate this statement by justifying the importance of the location of a house you are planning to buy. (4)
- 4.3 Explain the role of the estate agent to the seller of a property. (4)
- 4.4 List THREE responsibilities of owning a home. (3)
- 4.5 Point out the advantages of renting a home in this current market. (4)
- 4.6 Read the following scenario and answer the questions that follow.

Tshpo is a young working adult who has moved into a townhouse with a garden. He enjoys gardening and entertaining friends.

Tshpo took his clothes to a nearby laundry for the past few months, but found that it is very time-consuming and expensive. He decided that he needed to buy his own washing machine, but he does not have a credit card or enough money to pay cash.

- 4.6.1 Suggest a type of transaction that would be most suitable for Tshpo to acquire the washing machine. (2)
- 4.6.2 List THREE advantages and THREE disadvantages of this type of transaction for Tshpo.

Tabulate your answer as follows:

Advantages	Disadvantages
(3)	(3)

- 4.6.3 The washing machine has a “3-year guarantee”. Explain what this guarantee means. (3)
- 4.6.4 There are many ways in which we as individual can reduce our carbon footprint and thus help reduce the effects of global warming.

Formulate and explain a set of criteria in order to make a sensible eco-friendly choice when purchasing an automatic washing machine. (5 x 2) (10)

TOTAL SECTION D: 40

SECTION E: THEORY OF PRODUCTION AND MARKETING OF FOOD, CLOTHING AND SOFT FURNISHING

QUESTION 5

- 5.1 Explain the following:
- 5.1.1 *Target group* (2)
- 5.1.2 *Pricing* (2)
- 5.2 Discuss the importance of selecting the correct equipment for the task and the impact on producing a quality and profitable product. (4)
- 5.3 Name THREE aspects to consider when planning production schedules for the staff. (3)
- 5.4 The labour laws make it difficult to dismiss a worker or employee. Identify FIVE aspects that should be included in an employment contract which benefits both employer and employee. (5)
- 5.5 Read the following scenario and answer the questions that follow.

Rubena is a young adult who attends evening classes at the university. She needs money to pay for her studies and other expenses. Rubena lives with her parents and they agreed that she should run her business from their home during the day. She is very creative and enjoys baking. Rubena did market research and found that there was a need for unique cupcakes. To improve her skills she attended a cake decorating course. Her grandfather gave her some money to start her business. She used the money to buy kitchen equipment and raw materials. Her business is called "Cupcakes by Design". She advertises the cupcakes in the local newspaper once a week.

After six months, her business has grown so much that she needed to employ two other people to help with the baking three times a week.

- 5.5.1 Rubena did market research and then decided to bake cupcakes for parties. Why is it important to do market research before starting a business? (3)
- 5.5.2 Evaluate the suitability of the name that Rubena has chosen for her business. (5)
- 5.5.3 Identify from the scenario FOUR human resources that Rubena has to help her producing good quality products. (4)
- 5.5.4 Rubena's profit margin is 70%. Calculate the selling price of ONE cupcake if the production cost for a batch of 24 cupcakes is R40,00. Show all calculations. (4)
- 5.5.5 Identify from the scenario FOUR possible reasons why Rubena's business is successful. (4 x 2) (8)

TOTAL SECTION E: 40
GRAND TOTAL: 200

ANSWER SHEET

NAME

SEPTEMBER 2013

SECTION A

QUESTION 1.1

1.1.1	A	B	C	D	(1)
1.1.2	A	B	C	D	(1)
1.1.3	A	B	C	D	(1)
1.1.4	A	B	C	D	(1)
1.1.5	A	B	C	D	(1)
1.1.6	A	B	C	D	(1)
1.1.7	A	B	C	D	(1)
1.1.8	A	B	C	D	(1)
1.1.9	A	B	C	D	(1)
1.1.10	A	B	C	D	(2)
1.1.11	A	B	C	D	(2)
1.1.12	A	B	C	D	(1)
1.1.13	A	B	C	D	(1)
1.1.14	A	B	C	D	(1)
1.1.15	A	B	C	D	(2)
1.1.16	A	B	C	D	(2)
1.1.17	A	B	C	D	(1)
1.1.18	A	B	C	D	(2)
1.1.19	A	B	C	D	(2)
1.1.20	A	B	C	D	(1)
1.1.21	A	B	C	D	(1)

QUESTION 1.2

1.2.1	A	B	C	D	E	F
1.2.2	A	B	C	D	E	F
1.2.3	A	B	C	D	E	F
1.2.4	A	B	C	D	E	F
1.2.5	A	B	C	D	E	F

(5 x 1)	5

QUESTION 1.3

1.3.1	
1.3.2	
1.3.3	
1.3.4	

(4 x 1)	4

QUESTION 1.4

(4 x 1)	4

27

TOTAL	
	40

ANTWOORDBLAD

NAAM

SEPTEMBER 2013

AFDELING A

VRAAG 1.1

1.1.1	A	B	C	D	(1)
1.1.2	A	B	C	D	(1)
1.1.3	A	B	C	D	(1)
1.1.4	A	B	C	D	(1)
1.1.5	A	B	C	D	(1)
1.1.6	A	B	C	D	(1)
1.1.7	A	B	C	D	(1)
1.1.8	A	B	C	D	(1)
1.1.9	A	B	C	D	(1)
1.1.10	A	B	C	D	(2)
1.1.11	A	B	C	D	(2)
1.1.12	A	B	C	D	(1)
1.1.13	A	B	C	D	(1)
1.1.14	A	B	C	D	(1)
1.1.15	A	B	C	D	(2)
1.1.16	A	B	C	D	(2)
1.1.17	A	B	C	D	(1)
1.1.18	A	B	C	D	(2)
1.1.19	A	B	C	D	(2)
1.1.20	A	B	C	D	(1)
1.1.21	A	B	C	D	(1)

27

VRAAG 1.2

1.2.1	A	B	C	D	E	F
1.2.2	A	B	C	D	E	F
1.2.3	A	B	C	D	E	F
1.2.4	A	B	C	D	E	F
1.2.5	A	B	C	D	E	F

(5 x 1) 5

VRAAG 1.3

1.3.1	
1.3.2	
1.3.3	
1.3.4	

(4 x 1) 4

VRAAG 1.4

(4 x 1) 4

TOTAAL 40

AFDELING E: TEORIE VAN PRODUKSIE EN BEMARKING VAN VOEDSEL, KLERE EN SAGTE MEUBLERING

VRAAG 5

- 5.1 Verduidelik die volgende:
- 5.1.1 *Teikemark* (2)
- 5.1.2 *Prysbepaling* (2)

- 5.2 Bespreek die belangrikheid vir die keuse van die korrekte apparaat vir die taak en die impak daarvan om 'n kwaliteit en winsgewende produk te vervaardig. (4)
- 5.3 Noem DRIE aspekte om te oorweeg wanneer produksie-skedules vir personeel beplan word. (3)
- 5.4 Die arbeidswette maak dit moeilik om 'n werker of werknemer te ontsaan. Identifiseer VYF aspekte wat in 'n dienskontrak ingesluit moet word om beide die werknemer en die werkgewer te beskerm. (5)
- 5.5 Lees die volgende scenario en beantwoord die vrae wat volg.

Rubena, 'n jong dame woon aandklasse by die universiteit by. Sy benodig geld om haar studies en ander uitgawes te betaal. Rubena bly by haar ouers en hulle het ingestem dat sy die besigheid van die huis kan bedryf. Sy is baie kreatief en is lief om te bak. Rubena het marknavorsing gedoen en gevind dat daar 'n behoefte is vir haar unieke kolwynpies (cupcakes). Om haar vaardighede te verbeter het sy klasse bygewoon vir koekversiering. Haar oupa het haar geld gegee om die besigheid te begin. Sy het die geld gebruik om kombuisapparaat en grondstowwe te koop. Haar besigheid word as "Cupcakes by Design" bemark. Sy adverteer haar kolwynpies eenmaal per week in die plaaslike koerant.

Na ses maande het die besigheid so gegroei dat sy twee addisionele persone moes aanstel om drie maal per week te help bak.

- 5.5.1 Rubena het marknavorsing gedoen en besluit om kolwynpies vir partytjies te bak. Waarom is dit belangrik om marknavorsing te doen voordat jy 'n besigheid begin? (3)
- 5.5.2 Evalueer die geskiktheid van die naam wat Rubena vir haar besigheid gekies het. (5)
- 5.5.3 Identifiseer uit die scenario VIER menslike hulpbronne wat Rubena kan gebruik om goeie kwaliteit produkte te vervaardig. (4)
- 5.5.4 Rubena se winsgrens is 70%. Bereken die verkoopprys van EEN kolwynpie as die produksiekoste van 24 kolwynpies R40,00 is. Toon alle berekeninge. (4)
- 5.5.5 Identifiseer en verduidelik uit die scenario VIER moonlike redes waarom Rubena se besigheid suksesvol is. (4 x 2) (8)

TOTAAL AFDELING E: 40

GROOTTOTAAL: 200

AFDELING D: BEHUISING EN HUISHOUDELIKE TOERUSTING

VRAAG 4

4.1 Verduidelik die volgende terme:

4.1.1 Mandaat (2)

4.1.2 Aktekanthoofdie (2)

4.2 "Ligging" is die advies wat deur finansiële adviseurs en eiendomkenners gegee word.

4.3 Motiveer die stelling deur die belangrikheid van die ligging van 'n huis te bespreek wat jy oorweeg om te koop. (4)

4.4 Verduidelik die rol van 'n eiendomsagent aan die verkoper by die verkoop van 'n huis. (4)

4.5 Lys DRIE verantwoordelikhede om 'n huis te besit. (3)

4.6 Gee die voordele om 'n huis te huur in die huidige mark. (4)

4.6 Lees die volgende scenario en beantwoord die vrae wat volg.

Tshpo, 'n jong, werkende volwassene het in 'n meenthuis met 'n tuin ingetrek. Hy hou daarvan om in die tuin te werk en om vriende te onthaal. Vir die afgelope paar maande neem Tshpo sy klere na 'n naby geleë wassery, maar vind dit baie tydrowend en duur. Hy het besluit dat hy sy eie wasmasjien te koop, maar hy het nie 'n kredietkaart of genoeg geld om dit kontant te betaal nie.

4.6.1 Stel 'n transaksie voor wat geskik is vir Tshpo om 'n wasmasjien te kan koop. (2)

4.6.2 Lys DRIE voordele en DRIE nadele oor die tipe transaksie vir Tshpo. (2)

Tabuleer jou antwoord soos volg:

Voordele	Nadele
(3)	(3)

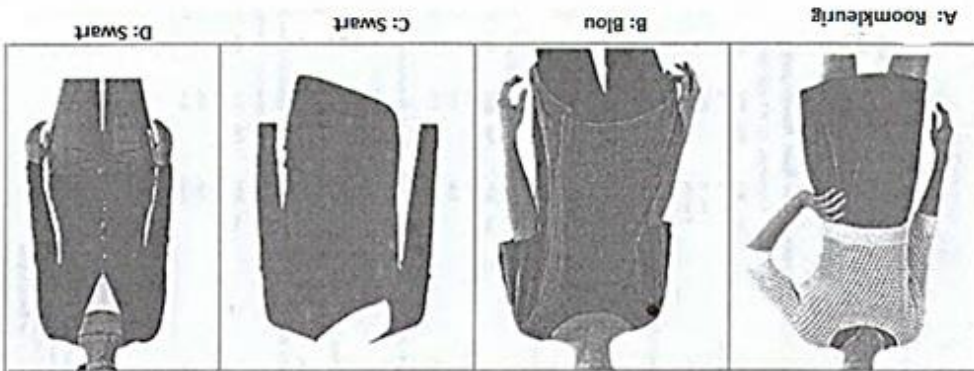
4.6.3 Die wasmasjien het 'n 3-jaar waarborg. Verduidelik wat die waarborg beteken. (3)

4.6.4 Daar is baie maniere hoe 'n individu sy koolstofvoetspoor kan verklein en dus help om die gevolge van aardverwarming te verminder. (3)

Formuleer en verduidelik 'n stel kriteria om 'n geskikte ekovriendelike keuse te maak wanneer 'n outomatiese wasmasjien gekoop word. (10)

TOTAAL AFDELING D: 40

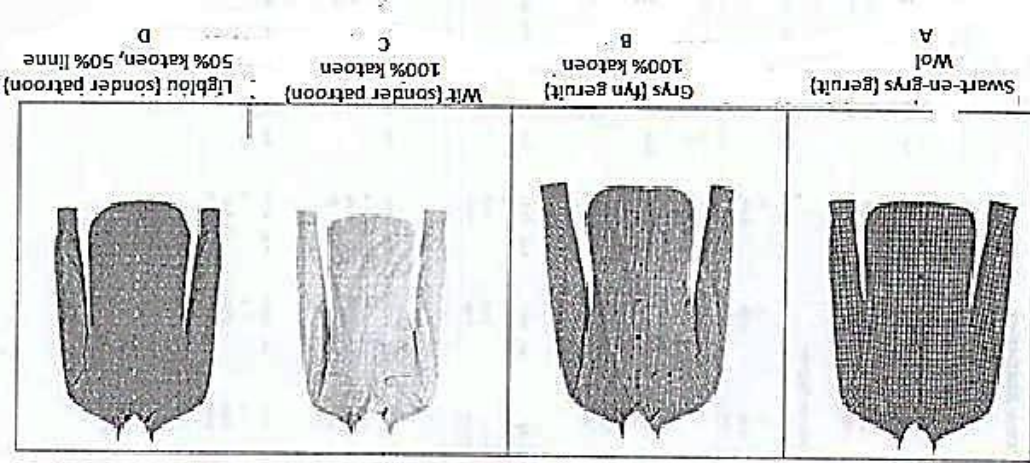
3.4 Bestudeer die VIER prente en beantwoord die vrae wat volg.



3.4.1 Identifiseer die mees klassieke breiwerk. Gee DRIE redes vir jou keuse. (4)

3.4.2 Kies die breiwerk wat die mees geskik sou wees vir 'n vrou om na formele werktunisie in die aand te dra. Gee DRIE redes vir jou keuse. (4)

3.5 Bestudeer die VIER prente en beantwoord die vrae wat volg.



3.5.1 Kies 'n hemp wat volgens jou die beste keuse is vir 'n basiese klerikas vir 'n professionele jongman. Gee DRIE redes vir jou keuse. (4)

3.5.2 Jy het EEN hemp gekies as item vir 'n basiese klerikas vir 'n professionele jong man in VRAAG 3.5.1. Die jong man het 'n paar swart skoene. Stel VIER ander fundamentele items voor vir hierdie man se klerikas. Die items moet nie enige van die hemde in die prentjie wees nie. (4)

3.6 Evalueer die volgende stelling krities.

Mense met 'n goeie selfbeeld het nie nodig om handelsname te dra nie. (10)

TOTAAL AFDELING C: 40

AFDELING C: KLEDING

VRAAG 3

3.1 Verduidelik die volgende terme:

3.1.1 *Mode*

(2)

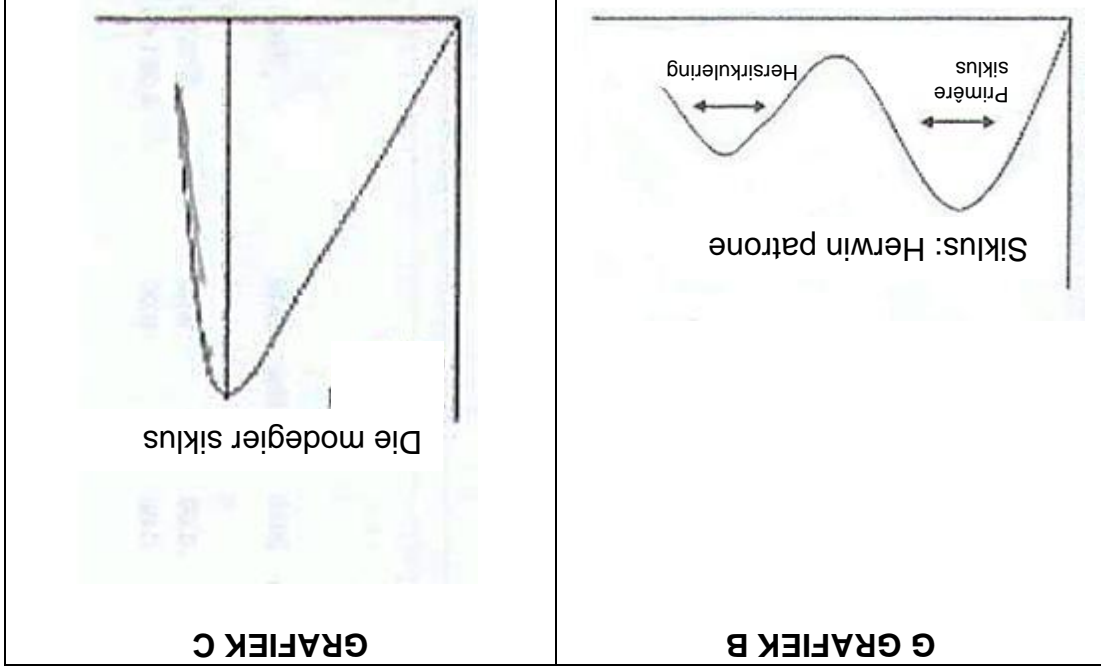
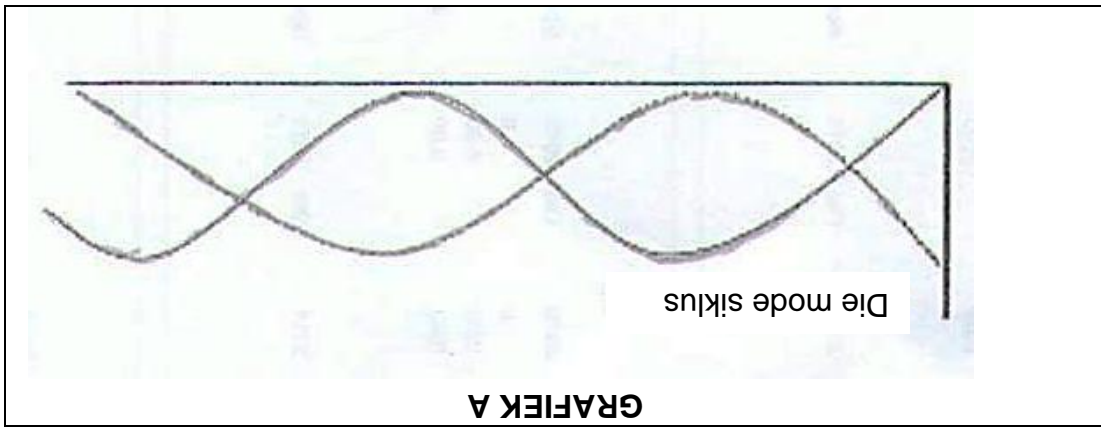
3.1.2 *Styl*

(2)

3.2 Na graad 12 moet jy vir 'n onderhoud gaan vir 'n witboordjie beroep. Beskryf met redes waarom jy op 'n sekere manier moet aantrek.

(4)

3.3 Verduidelik wat die volgende grafiek van die modesiklusse voorstel.



(6) (3 x 2)

- 2.3 Lees die volgende uittreksel oor MIV/Vigs en voeding wat gepubliseer is in *Gesondheid24*, op 29 Mei 2009 en beantwoord die vrae wat volg.
- Voeding is 'n belangrike gesondheidskwessie vir elke persoon, maar veral belangrik vir mense wat met MIV/Vigs leef. Deur gesond te eet behoor jy jou gewig en versterk jou immuunstelsel. Dit is dan moontlik om jou gewig en versterk jou immuunstelsel. Dit is dan moontlik om jou gewig en versterk jou immuunstelsel. Deur gesond te eet behoor jy jou gewig en versterk jou immuunstelsel.
- 2.3.1 Waarvoor staan die afkorting Vigs? (2)
- 2.3.2 "Deur gesond te eet behoor jy jou gewig en versterk jou immuunstelsel." (a) Lys TWEE anti-oksidadant vitamienne wat 'n rol speel om die immuunstelsel gesond te hou. (b) Gee EEN vrug wat 'n goeie bron van hierdie vitamienne is. (4)
- | (a) Vitamienne | (b) Vrugte (bronne) |
|----------------|---------------------|
| A | |
| B | |
- (2 x 2) (4)
- 2.4 Osteoporose
- 2.4.1 Verduidelik wat osteoporose is en die effek wat dit op 'n liggaam het. (4)
- 2.4.2 Waarom affekteer osteoporose meestal bejaardes? (4)
- 2.4.3 Lys TWEE mineraalelemente wat 'n belangrike rol speel by osteoporose. (2)
- 2.5 'n Jong werker het 'n hoë bloedcholesterolvlak. Stel 'n geskikte hoë vesel en lae vet middagtepakkie. Motiveer die keuse van VIER items. (8)
- TOTAAL AFDELING B: 40**

AFDELING B: VOEDSEL EN VOEDING

VRAAG 2

2.1 Lees die volgende scenario en beantwoord die vrae wat volg.

Sanchia is 32 jaar oud en voel gedurig moeg. Sy is meer dors as gewoonlik en urineer meer as gewoonlik. Sy het 'n paar kilogram gewig verloor sonder om te probeer om gewig te verloor.

2.1.1 Identifiseer die gesondheidsverwante toestand. (2)

2.1.2 Verduidelik waarom Sanchia die simptome ervaar wat in die scenario genoem word. (6)

2.1.3 Kies uit die volgende lys voedsels wat vir Sanchia geskik sal wees vir 'n middel-van-die-oggend versnapering. Verduidelik jou keuse met redes.

Voedsele waaruit Sanchia kan kies:

- Semel muffin met lae vet kaas
- Provita met lae vet kaas
- Rogbrood met lae vet kaas
- Witbrood met lae vet kaas

(4)

2.2 Parmalat het onlangs EasyGest lae vet laktose-vrye melk bekendgestel.



Sal die melk geskik wees vir 'n persoon wat melk-intolerant is of 'n melkallergie het? Verduidelik jou keuse.

(4)

1.4 Herrangskik die stappe van klerkasbeplanning. Skryf die korrekte volgorde van die stappe neer deur die letters (A–D) in die toepaslike ruimtes op die antwoordblad in te vul.

A Kyk na jou beskikbare hulpbronne

B Evalueer die bestaande klerkas inventaris

C Beplan jou klerkas

D Doen 'n behoefte-analise

(4) (4 x 1)

TOTAAL AFDELING A: 40

1.2 Pas die beskrywing in KOLOM B by die tipe belasting in KOLOM A. Maak 'n kruisie (X) in die blokke (A-F) langs die vraagnummer (1.2.1-1.2.5) op die aangehegte ANTWOORBLAD.

KOLOM A		KOLOM B	
Belasting		Beskrywing	
1.2.1	Lopende Betaalstelsel	A	'n Minimum inkomstebelasting wat betaal word deur werknemers wat tot R60 000,00 per jaar verdien
1.2.2	Aksynsbelasting	B	Belasting betaal op die wins van 'n tweede eiendom wat verkoop word
1.2.3	Voorlopige belasting	C	Belasting word afgetrek deur die werkgewer wanneer die werknemer meer R60 000,00 per jaar verdien
1.2.4	Boedelbelasting	D	Belasting betaal deur mense met inkomste anders as salarisse
1.2.5	Kapitaalwinstbelasting	E	Belasting wat betaal word op alkohol en tabak
F			Na iemand se afsterwe word die belasting betaal

(5) (5 x 1)

1.3 Kies die korrekte woord/term in hakkes vir elk van die volgende beskrywings. Skryf slegs die woord/term langs die vraagnummer (1.3.1-1.3.4) op die aangehegte ANTWOORBLAD.

- 1.3.1 (Titelakte/Koopkontrak) is 'n regsdokument wat uitgereik word deur die Registraat van Aktes as bewys dat die koper nou die wettige eienaar van die eiendom is
- 1.3.2 (Oordragkoste/Hereeregte (titelakte)) is staatsbelasting wat betaal word wanneer eienaarskap van die eiendom aan die koper oorgedra word
- 1.3.3 (Huurkontrak/Subsidie) is die ooreenkoms tussen eienaar en die huurder
- 1.3.4 (Transportbeseorger/Verbandprokureur) is 'n gekwalifiseerde prokureur wat die proses van oordrag tot die teken van dokumente behartig

(4) (4 x 1)

- 1.1.17 Deeltitel verwys na ...
- A wanneer 'n groep huise een erf deel.
 B wanneer een mens die ontwikkeling besit.
 C 'n ko-operatiewe eienaarskap.
 D dat 'n persoon nie die eiendom besit nie. (1)
- 1.1.18 Kies die kombinasie van fooie wat nodig is om betaal te word vir die registrasie van eiendom op die koper se naam.
1. Oordragkoste
 2. Verband registrasiekostes
 3. Inspeksiefooie
 4. Oordragkoste
 5. Transportakke
 6. Kommissie
- A 1, 2 en 4
 B 2, 3 en 6
 C 1, 4 en 5
 D 3, 5 en 6 (2)
- 1.1.19 Wanneer jy 'n kontrak optrek vir 'n bouer moet die volgende ingesluit wees:
1. Besonderhede van die huisplan
 2. Bouspesifikasies
 3. Oordragkoste
 4. Datum wanneer dit voltooid moet wees
 5. Jou kwalifikasies vir die huislening
- A 1, 3 en 4
 B 2, 3 en 4
 C 1, 3 en 5
 D 1, 2 en 4 (2)
- 1.1.20 Die volgende beginsel is belangrik vir voorraad beheer en bergingsprosedure:
- A Voldoen aan spesifikasies.
 B Ekonomiese gebruik van menslike hulpbronne.
 C Eerste in, eerste uit.
 D Kwaliteit van verpakking. (1)
- 1.1.21 Die addisionele koste wat 'n besigheid moet betaal om dit aan die gang te hou is ...
- A oorhoofse koste.
 B begroting.
 C kapitaal uitgawes.
 D koste. (1)

- 1.1.12 Klere gaan op uitverkoping gedurende die fase van die modesiklus.
- A Bekendstelling
B Afname
C Hoogtepunt
D Toename
- (1)
- 1.1.13 Die term *silloeët* verwys na ...
- A die buitelyne van 'n kledingstuk.
B 'n nuwe kledingstyl wat deur 'n paar modeliers gedra word.
C individuele verskille in 'n styl.
D die algemene rigting van 'n modeneiging.
- (1)
- 1.1.14 *Haute couture* is wanneer ...
- A mode baie gewaagd en populêr vir 'n kort tyd is.
B modestyie is elegant en bly vir 'n lang tyd gewild.
C mode oor die algemeen deur almal aanvaar word.
D modestyie uniek is en deur 'n klein groep mense gedra word.
- (1)
- 1.1.15 Verstes vir 'n professionele voorkoms:
1. Enige juweliersware en bykomstighede is aanvaarbaar.
2. Dra slegs neutrale kleure.
3. Klere moet goed pas en gemaklik wees.
4. 'n Algehele goed versorgde voorkoms.
5. Dra klere slegs volgens die seisoen.
- A 1 en 5
B 4 en 5
C 3 en 4
D 1 en 2
- (2)
- 1.1.16 Voordele van korporatiewe klere:
1. Reflekteer jou individualiteit.
2. 'n Prent van jouself.
3. 'n Gevoel van selfwaardigheid
4. Projekteer die beeld van die maatskappy.
5. Stuur 'n positiewe boodskap uit na die werknemer.
6. Voel deel van die werkers
- A 1, 3 en 5
B 2, 4 en 6
C 1, 2 en 3
D 4, 5 en 6
- (2)

- 1.1.6 'n Sielkundige steurnis wat deur selfverhongering, verlies aan apyt en uitermatige gewigsverlies gekenmerk word, staan as ... bekend.
A MIV/Vigs
B anorexia nervosa
C bulimie
D osteoporose
(1)
- 1.1.7 Wanneer 'n persoon aan anemie ly, watter vitamien is bekend daarvoor om die absorpsie van yster te bevorder en gevolglik by te dra tot 'n verbeterde yster-status?
A Vitamien A
B Vitamien B₁
C Vitamien C
D Vitamien D
(1)
- 1.1.8 Die beste ysterryke voedsel wat 'n rol speel in die verskaffing van yster is ...
A lemoene en koelawels.
B lewer en rooivleis.
C spinasie en rosyne.
D eiers en neute.
(1)
- 1.1.9 Die volgende dieëtriglyn is belangrik vir persone wat aan hipertensie ly.
A Maak styselfvoedsels die basis van jou maaltyd.
B Drink skoon, veilige water.
C Gebruik suiker spaarsamig en nie onnodig tussen maaltye nie.
D Gebruik sout spaarsamig.
(1)
- 1.1.10 Identifiseer die voedsel wat allergieë veroorsaak:
A Brood, melk en neute
B Soja, melk en eiers
C Brood, vleis en eiers
D Rys, neute en soja
(2)
- 1.1.11 Volgens die nuwe etiket-wetgewing is dit verpligtend dat die volgende inligting op 'n pakkie beskuit moet verskyn.
1. Naam en fisiese adres van die vervaardiger, invoerder of handelaar
2. Instruksies hoe om dit te gebruik
3. Lys van bestanddele
4. Instruksie vir berging
A 1 en 2
B 1 en 3
C 2 en 4
D 3 en 4
(2)

AFDELING A

VRAAG 1

1.1 Verskeie opsies word as moontlike antwoorde op die volgende vrae gegee. Kies die antwoord en maak 'n kruisie (X) in die blokke (A–D) langs die vraagnummer (1.1.1–1.1.21) op die aangehegte ANTWOORBLAD. GEEN punte sal toegeken word as meer as EEN kruisie (X) vir 'n antwoord verskyn nie.

VOORBEELD:

A	B	C	D
---	--------------	---	---

1.1.1 Die onderstaande verbruikersorganisasie ondersoek nie klagtes nie, maar verwys die verbruiker na die geskikte organisasie of liggaam.

- (1) A Suid-Afrikaanse Verbruikersunie
 B Nasionale Verbruikersforum
 C Hof vir Klein Eise
 D Suid-Afrikaanse Buro van Standaarde

1.1.2 Wanneer 'n verbruiker nie tevrede is met 'n produk nie, wie sal hy/sy eerste nader?

- (1) A Die Hof vir Klein Eise
 B 'n Verbruikersorganisasie
 C Die plek waar die produk gekoop was
 D Die vervaardiger van die produk

1.1.3 Wanneer 'n verbruiker 'n klag wil indien oor 'n voedseltekort sal hy/sy die volgende instelling nader:

- (1) A Suid-Afrikaanse Buro vir Standaarde
 B Departement van Gesondheid
 C Kompetisie Kommissie
 D Pers Ombudsman

1.1.4 Watter staatsinstelling kollekteer belasting namens die regering?

- (1) A Nasionale Verbruikersforum
 B Departement van Finansies
 C Suid-Afrikaanse Buro van Standaarde
 D Suid-Afrikaanse Inkomstediens

1.1.5 Kies die brood wat van BTW vrygestel is.

- (1) A Bruinbrood
 B Saadbrood
 C Witbrood
 D Volgraanbrood

INSTRUKSIES EN INLICHTING

1. Hierdie vraestel bestaan uit VYF afdelings.

AFDELING		PUNTE	TYD (MINUTE)
A: Kortrae		40	20
B: Voedsel en Voeding		40	40
C: Kleding		40	40
D: Behuising en Huishoudelike Toerusting		40	40
E: Teorie van Produkse en Entrepreneurskap		40	40
TOTAAL		200	180

2. AL die afdelings is VERPLIGTEND.
3. Beantwoord AFDELING A op die aangehegte ANTWOORDBLAD en plaas dit in jou ANTWOORDEBOEK.
4. Nommer die antwoorde korrek volgens die nommeringstelsel wat in hierdie vraestel gebruik word.
5. Begin ELKE vraag op 'n NUWE bladsy.
6. 'n Sakrekenaar mag gebruik word.
7. Gee aandag aan spelling en sinskonstruksie.
8. Skryf slegs met swart of blou ink.
9. Skryf netjies en leesbaar.

Hierdie vraestel bestaan uit 15 bladsye insluitend 'n antwoordblad.



TYD: 3 uur

PUNTE: 200

VERBRUIKERSTUDIES

SEPTEMBER 2013

GRAAD 12

**NASIONALE
SENIOR SERTIFIKAT**

Province of the
EASTERN CAPE
EDUCATION

