

ENGINEERING GRAPHICS AND DESIGN

INGENIEURSGRAFIKA EN -ONTWERP

PAPER 1

VRAESTEL 1

MEMORANDUM

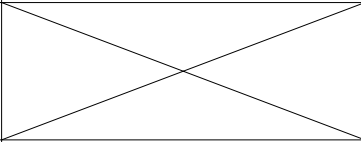
GR 12

SEPTEMBER 2015

This memorandum consists of 7 pages.

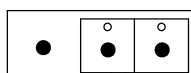
Hierdie memorandum bestaan uit 7 bladsye.

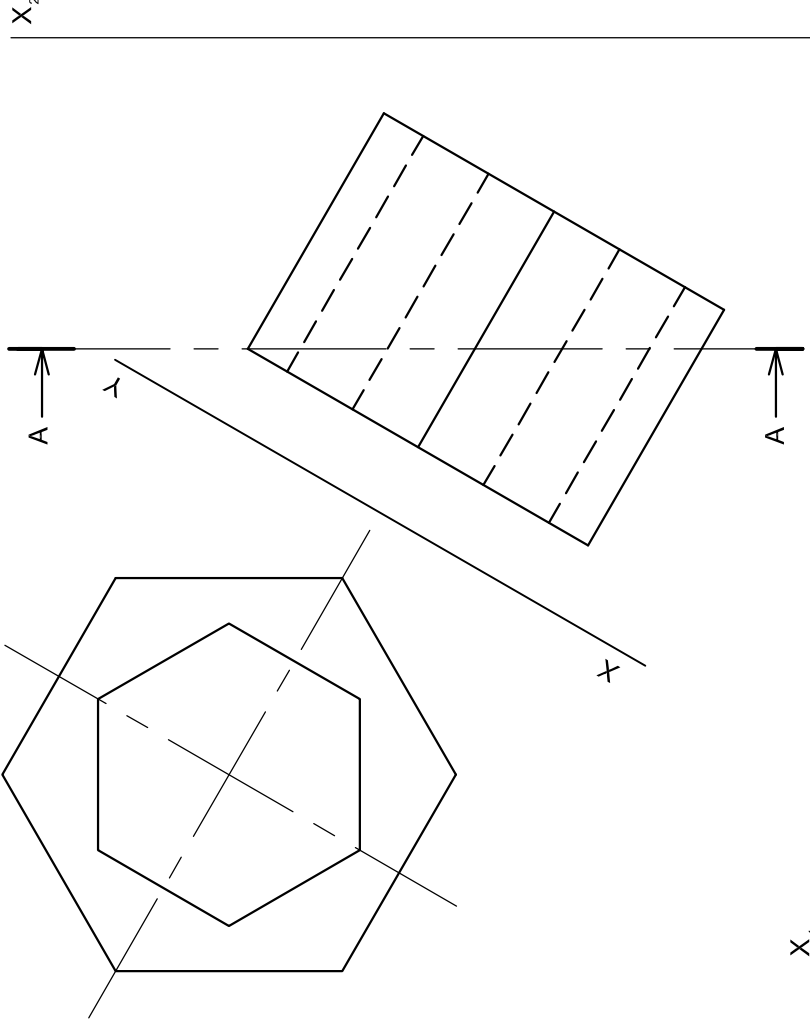
MEMORANDUM

ANSWERS		
1	EC-TR-15	1
2	1:200	1
3	D. CROSBY	1
4	4,2 METERS	1
5	1:40	1
6	140	1
7	RED	1
8	NORTH	1
9	GATE	1
10	IT MUST BE DEMOLISHED	1
11	NEXT STAND / PLOT / ERF	1
12	SEWERAGE	1
13	CONTOUR LINE	1
14	2	1
15	8 METERS	1
16	19,6 METERS	2
17	2 METERS	2
Show all the calculations for the following two questions		
18	$29 + 32 + 30 + 35 + 42$ = 168 METERS	3
19	$(14 \times 15,5) + (14 \times 13,1)$ = 400,4 m ²	4
20		4
TOTAL		30

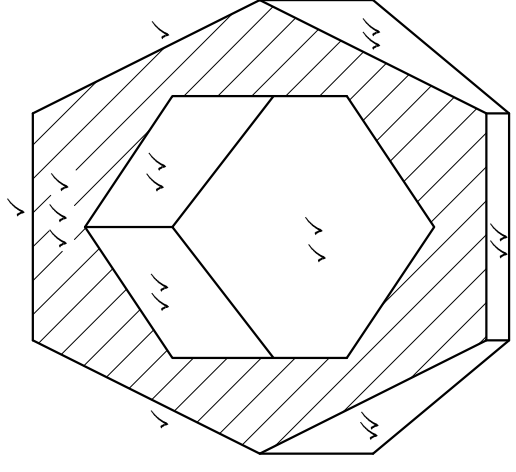
ANTWOORDE		
1	EC-TR-15	1
2	1:200	1
3	D. CROSBY	1
4	4,2 METER	1
5	1:40	1
6	140	1
7	ROOI	1
8	NOORD	1
9	HEK	1
10	MOET GESLOOP WORD	1
11	VOLGENDE ERF	1
12	RIOOLLYN	1
13	KONTOERLYN	1
14	2	1
15	8 METER	1
16	19,6 METER	2
17	2 METER	2
Toon alle berekeninge vir die volgende twee vrae		
18	$29 + 32 + 30 + 35 + 42$ = 168 METER	3
19	$(14 \times 15,5) + (14 \times 13,1)$ = 400,4 m ²	4
20		4
TOTAAL		30

20. ●● FREEHAND / VRYHAND

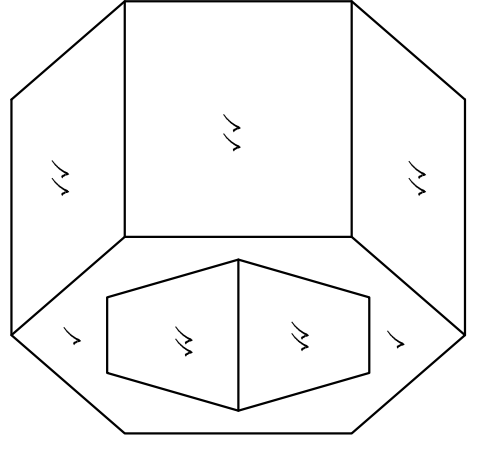




VRAESTEL 1 VRAAG 2
GR 12 SEPTEMBER 2015



X₁ Y₁



ASSESSMENT CRITERIA	
Sectional left view	18
Top view	12
TOTAL	30
ASSESSERINGSKRITERIA	
Deursnit linkeraansig	18
Booansig	12
TOTAAL	30

VRAESTEL 1 VRAAG 2
GR 12 SEPTEMBER 2015

PAPER 1 QUESTION 2
GR 12 SEPTEMBER 2015

MEMORANDUM

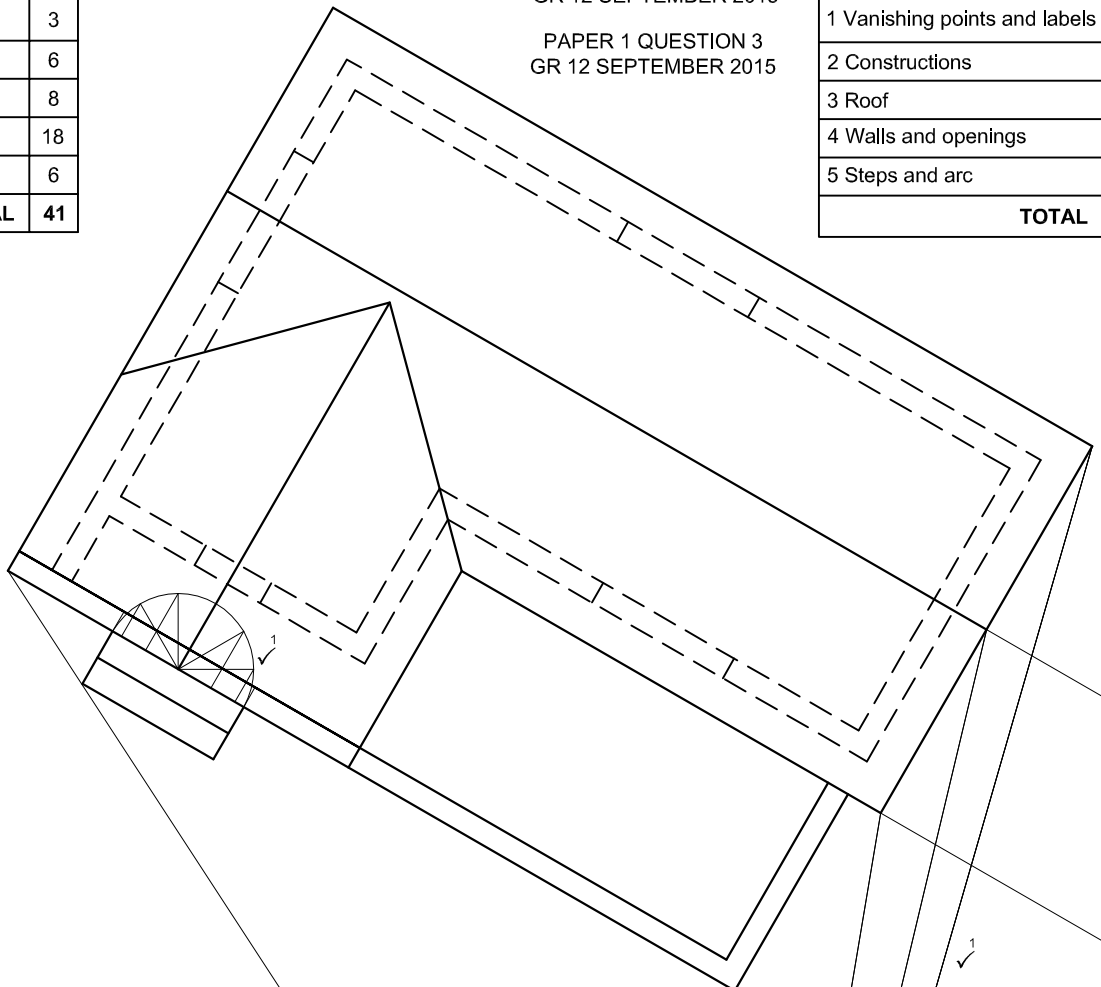
Y₂

ASSESSERINGSKRITERIA	
1 Verdwynpunte en byskrifte	3
2 Konstruksies	6
3 Dak	8
4 Mure en openings	18
5 Trappe en boog	6
TOTAAL	41

VRAESTEL 1 VRAAG 3
GR 12 SEPTEMBER 2015

PAPER 1 QUESTION 3
GR 12 SEPTEMBER 2015

ASSESSMENT CRITERIA	
1 Vanishing points and labels	3
2 Constructions	6
3 Roof	8
4 Walls and openings	18
5 Steps and arc	6
TOTAL	41

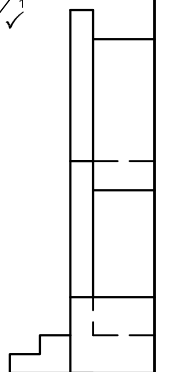
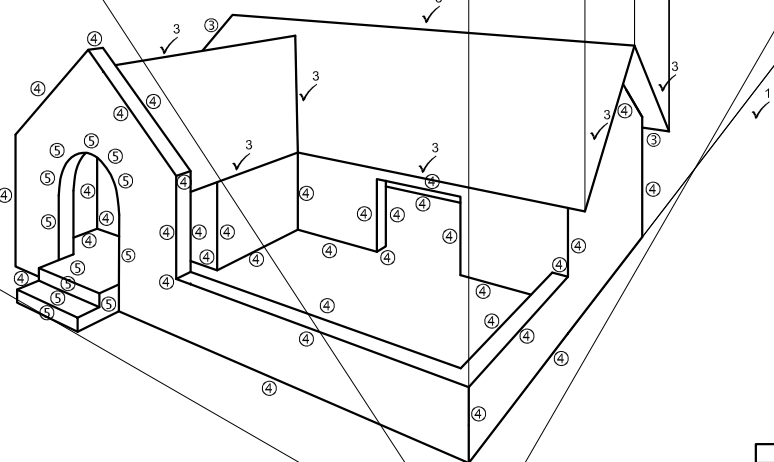
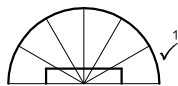
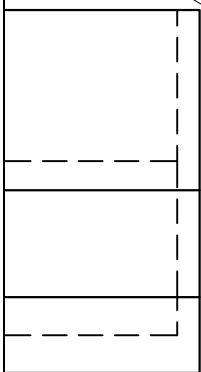


LVP

$\sqrt{1+1}$

RVP

$\sqrt{1+1}$



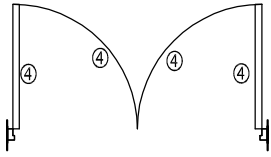
SP

MEMORANDUM

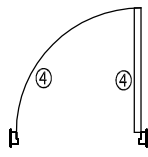
4

PAPER 1 QUESTION 4
GR 12 SEPTEMBER 2015

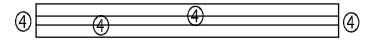
VRAESTEL 1 VRAAG 4
GR 12 SEPTEMBER 2015



DETAIL OF MARK ALLOCATION FOR FRONT DOOR (2x1 door = 2)



DETAIL OF MARK ALLOCATION FOR DOOR (1x3 doors = 3)

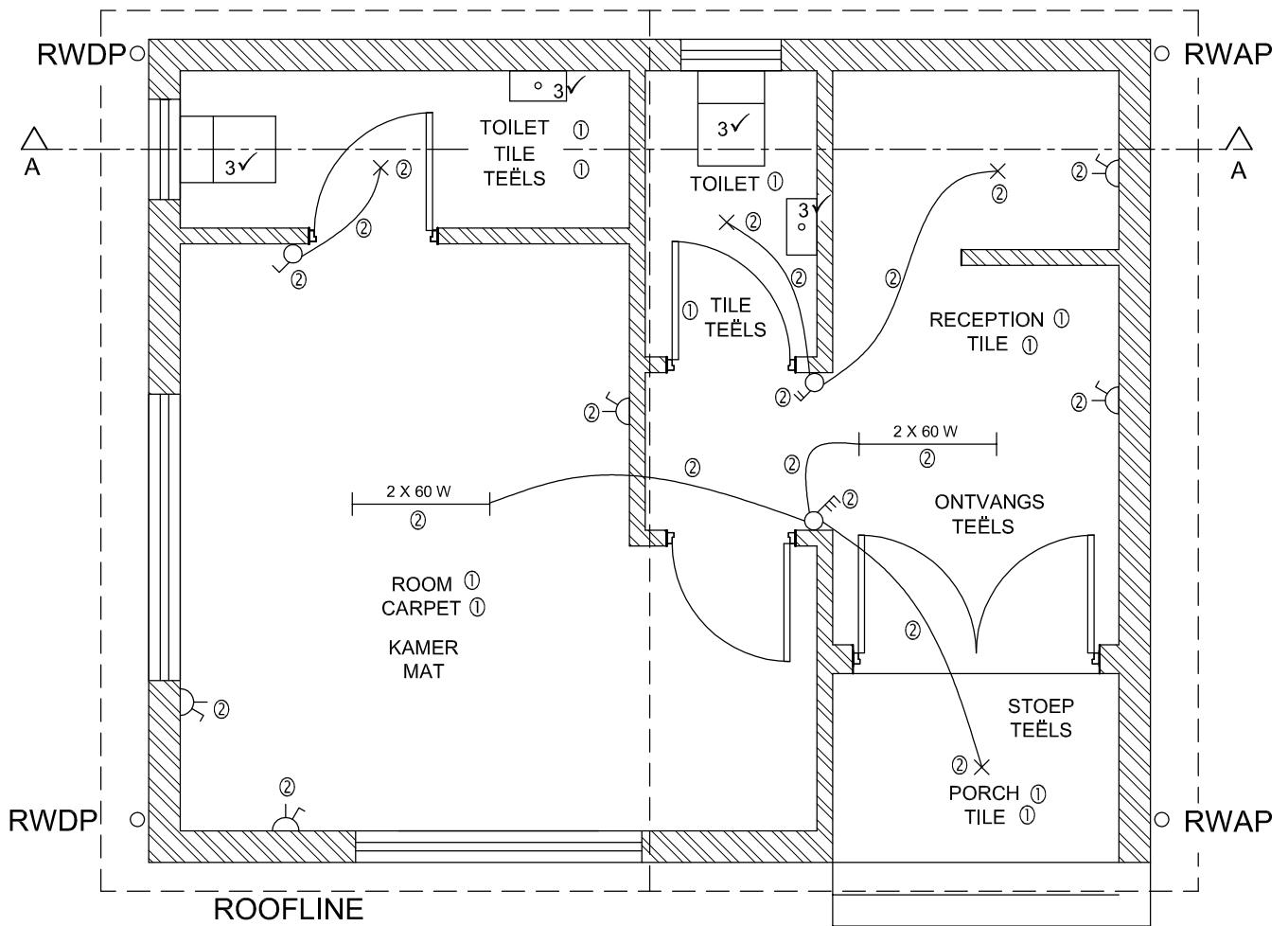


DETAIL OF MARK ALLOCATION FOR A WINDOW (2x4 windows = 8)

BESONDERHEDE VAN PUNTTOEKENNING VIR DIE VOORDEUR (2x1 deur = 2)

BESONDERHEDE VAN PUNTTOEKENNING VIR 'N DEUR (1x3 deure = 2)

BESONDERHEDE VAN PUNTTOEKENNING VIR 'N VENSTER (2x4 vensters = 8)



VLOERPLAN
SKAAL 1:50

FLOOR PLAN ①
SCALE 1:50 ①

ASSESSERINGSKRITERIA		ASSESSMENT CRITERIA	
VLOERPLAN		FLOOR PLAN	
1 BYSKRIFTE	6	1 LABELS	6
2 ELEKTRIES	10	2 ELECTRICAL	10
3 TOEBEHORE	4	3 FITTINGS	4
4 DEURE+VENSTERS	13	4 DOORS+WINDOWS	13
5 ARSERING	4	5 HATCHING	4
SUBTOTAAL	37	SUB TOTAL	37

DAK PUNTETOEKENNING:

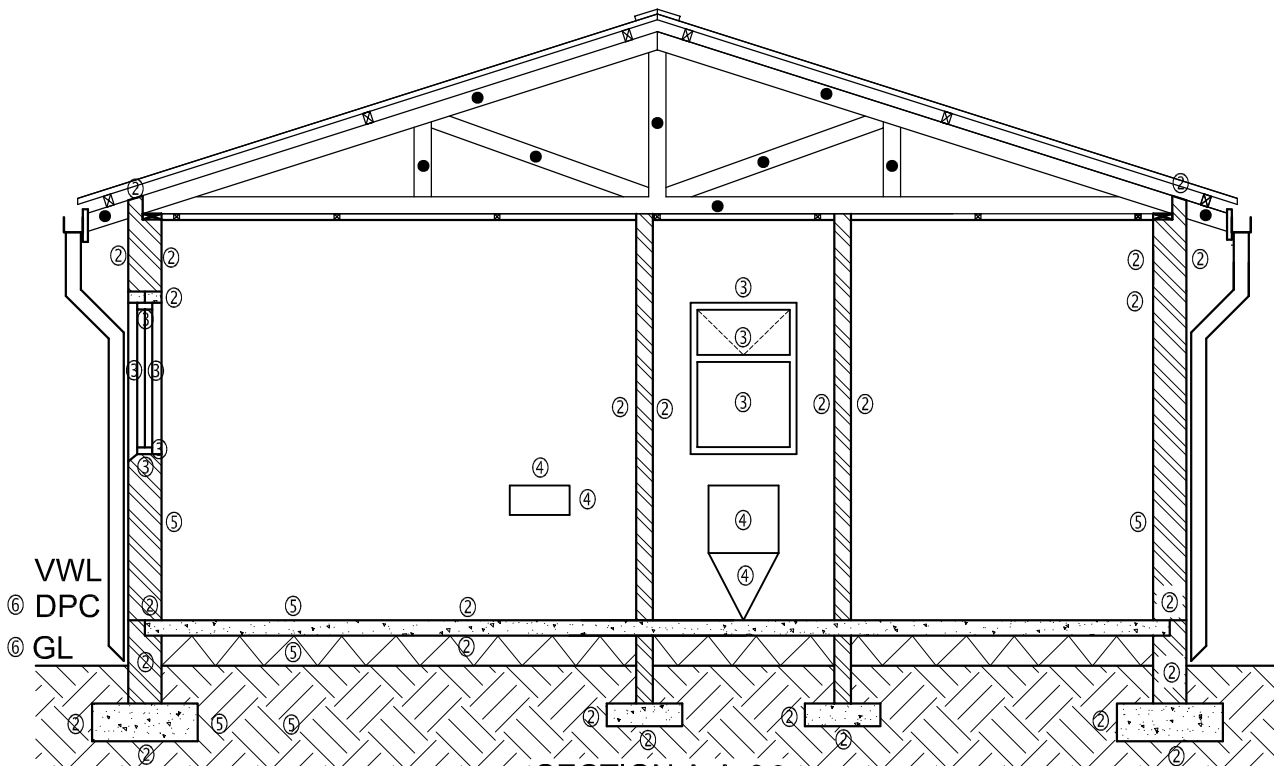
KORREKTE HELLING	2
DAKPLAAT	2
DAKNOK	1
KAPLATTE	2
DAKKAP	5
PLAFONLATTE	2
PLAFON	1
MUURPLATE	2
FASSIEBORD	2
GEUT	2

TOTAAL 21

ROOF MARK ALLOCATION:

CORRECT ANGLE	2
ROOF SHEET	2
ROOF CAP	1
PURLINS	2
TRUSS	5
BRANDERING	2
CEILING BOARD	1
WALL PLATES	2
FASCIA BOARDS	2
GUTTERS	2

TOTAL 21

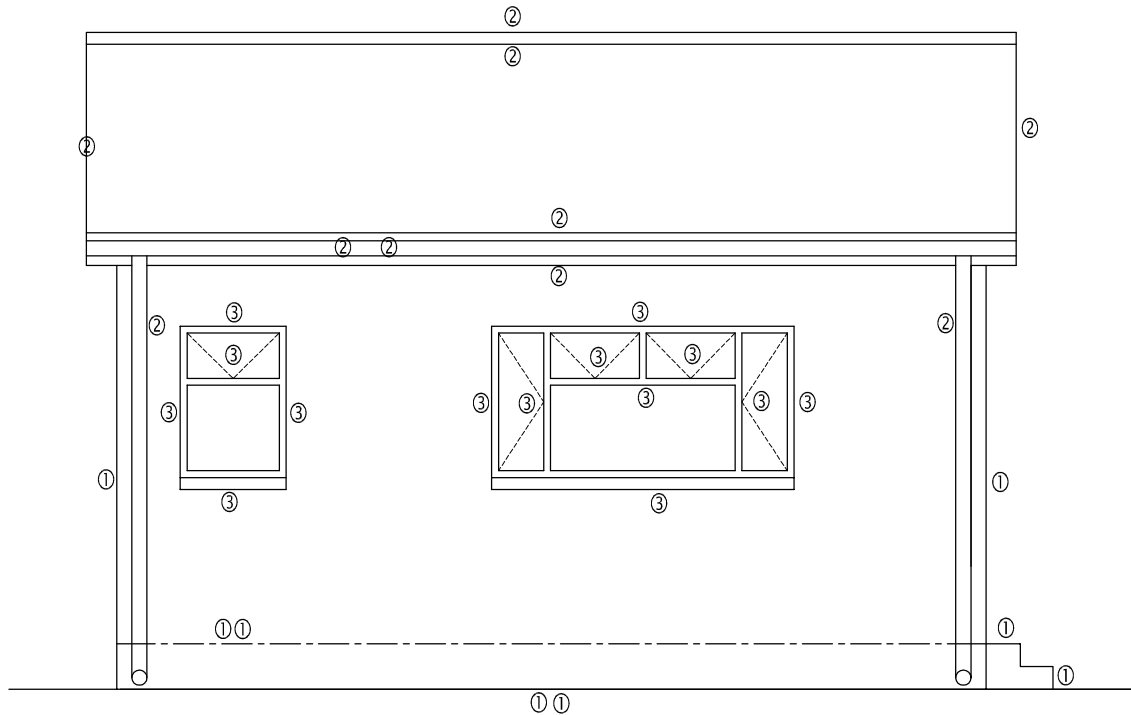


SECTION A-A 6 6
SNIT A-A

ASSESSERINGSKRITERIA		ASSESSMENT CRITERIA	
DEURSNEEAANSIG		SECTIONAL ELEVATION	
1 DAK	21	1 ROOF	21
2 MURE+VLOER+FONDASIES	13	2 WALLS+FLOOR+FOUNDATION	13
3 VENSTERS+DEURE	4	3 WINDOW+DOORS	4
4 TOEBEHORE	2	4 FIXTURES	2
5 ARSERING	3	5 HATCHING	3
6 BYSKRIFTE	2	6 LABELS	2
SUBTOTAAL	45	SUB TOTAL	45

PAPER 1 QUESTION 4
GR 12 SEPTEMBER 2015

VRAESTEL 1 VRAAG 4
GR 12 SEPTEMBER 2015



WEST ELEVATION ④ ④
WESAANSIG

ASSESSERINGSKRITERIA		
WESAANSIG		
1 MURE+VVV+TRAPPE	4	
2 DAK+FASSIE+RWAP	5	
3 VENSTERS	7	
4 BYSKRIFTE	1	
SUBTOTAAL	17	
TOTAAL	99	

WEST ELEVATION		WESAANSIG	
1 WALLS+FFL+STEP	4	1 MURE+VVV+TRAPPE	4
2 ROOF+FASCIA+ RWDP	5	2 DAK+FASSIE+RWAP	5
3 WINDOWS	7	3 VENSTERS	7
4 LABELS	1	4 BYSKRIFTE	1
SUBTOTAL	17	SUBTOTAAL	17
TOTAL	99	TOTAAL	99