



**ISEBE LEMFUNDO LEMPUMA KOLONI
EASTERN CAPE EDUCATION DEPARTMENT
OOS-KAAP ONDERWYSDEPARTEMENT**

**NATIONAL SENIOR CERTIFICATE
NASIONALE SENIOR SERTIFIKAAT**

**GRADE 11
GRAAD 11**

**ENGINEERING GRAPHICS AND DESIGN P1
INGENIEURSGRAFIKA EN -ONTWERP V1**

**NOVEMBER 2018
MEMORANDUM**

MARKS / PUNTE: 200

TIME / TYD: 3 hours / uur

**This memorandum consists of 7 pages.
Hierdie memorandum bestaan uit 7 bladsye.**

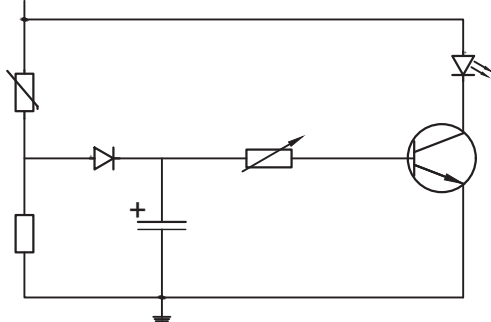
Copyright reserved / Kopiereg voorbehou

ANSWERS		
1	XOLELWA ARCHITECTS	1
2	CHANEL	1
3	MRS. H. LORDAN	1
4	ONE (<u>1</u> OF 4)	1
5	RODDING EYE	1
6	MAN HOLE	1
7	RAMP	1
8	WALL IS NOT CEILING HEIGHT	2
9	RED	1
10	GREY	2
11	SOUTH	2
12	NO WALLS NOT HATCHED	2
13	900	1
TOTAL		23

ANTWOORD		
1	XOLELWA ARGITEKTE	1
2	CHANEL	1
3	MEV. H. LORDAN	1
4	EEN (<u>1</u> VAN 4)	1
5	STEEKOOG	1
6	MANGAT	1
7	OPRIT	1
8	MUUR IS NIE TOT TEEN PLAFON NIE	2
9	ROOI	1
10	GRYS	2
11	SUID	2
12	NEE MURE IS NIE GEARSEER NIE.	2
13	900	1
TOTAAL		23

QUESTION / VRAAG 1B:

VCC = 6V



**FIRE ALARM
BRANDALARM**

[7]

ANTWOORD / QUESTION 14

Toon alle berekeninge / Show all calculations

calculation: add
correct values $2 \times (13.875 + 11.375)$
correct answer = **50,5 m**
correct unit

optel berekening
korrekte waardes
korrekte antwoord
korrekte eenheid

$(13.875 + 11.375 + 10.425 + 3.45 + 3.8 + 7.575 = 50,5 \text{ m})$

[3]

ANTWOORD / QUESTION 15

Toon alle berekeninge / Show all calculations

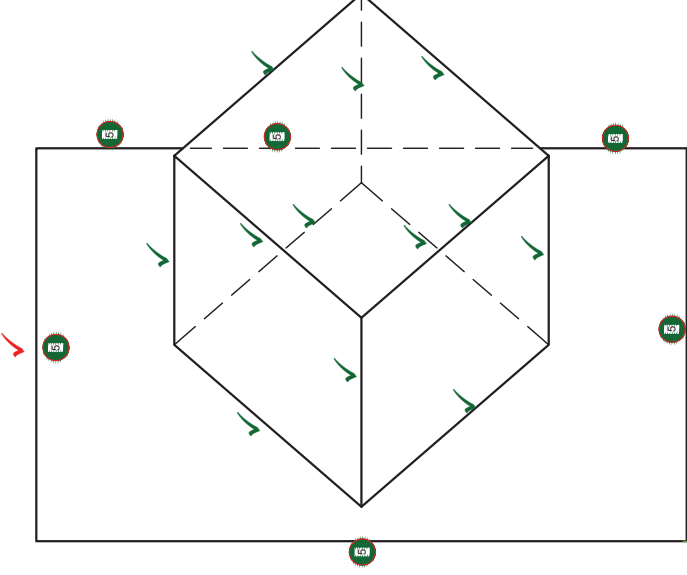
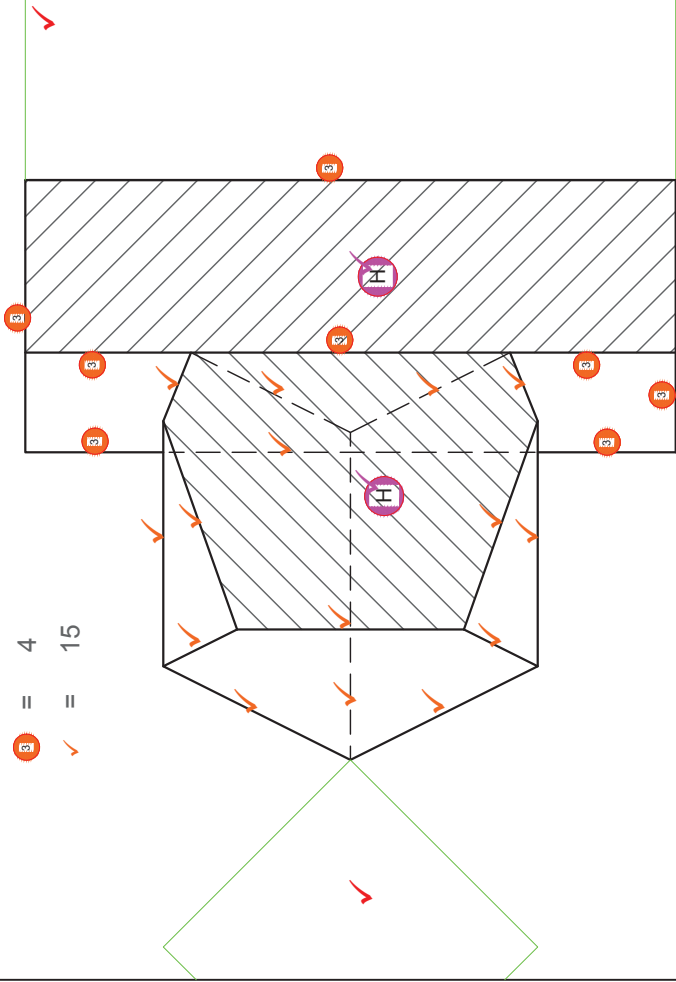
calculation (X)
correct values 6×3.8
correct answer = **22,8 m²**
correct unit and conversion to m

berekening (X)
korrekte waardes
korrekte antwoord
korrekte eenheid en omskakeling na m

[3]

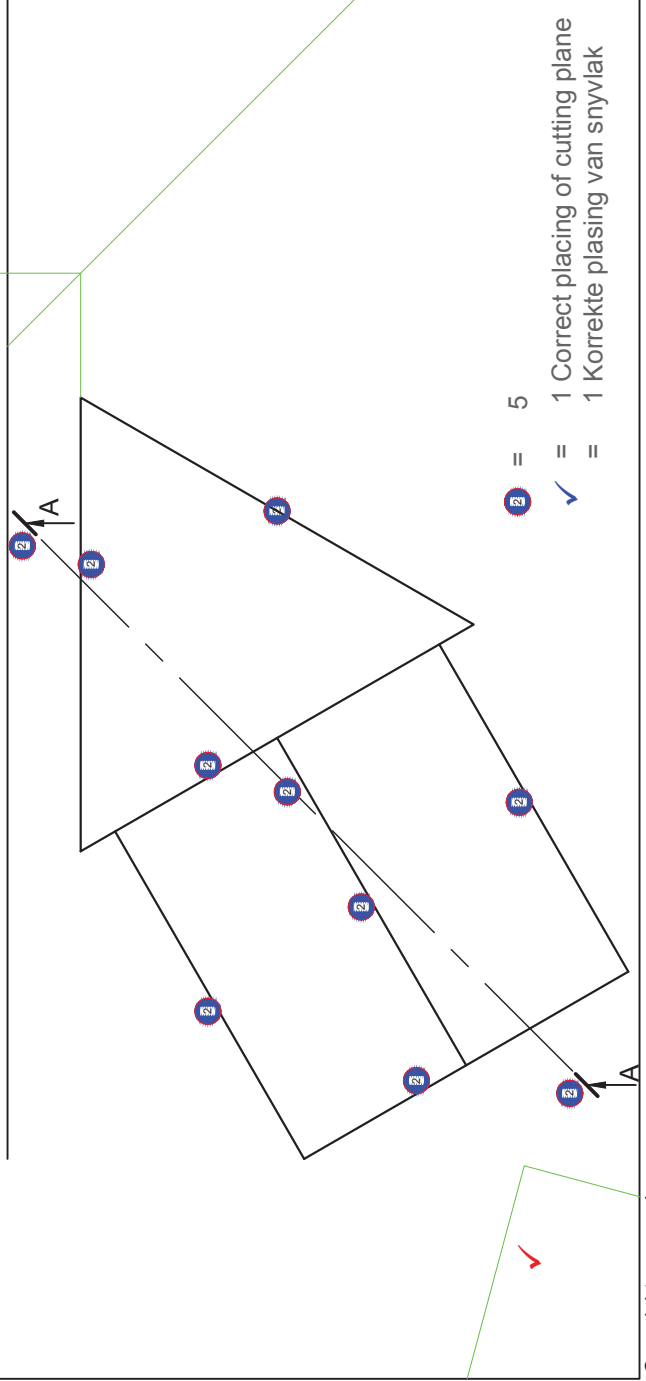
Ⓜ = 4
✓ = 15

Ⓜ = 3
✓ = 12



ASSESSERINGSKRITERIA	
1	KONSTRUKSIE + PLASING 4
2	BO-AANSIG 6
3	D/S VOORAANSIG 19
4	ARSERING 2
5	LINKERAANSIG 15
TOTAAL 46	

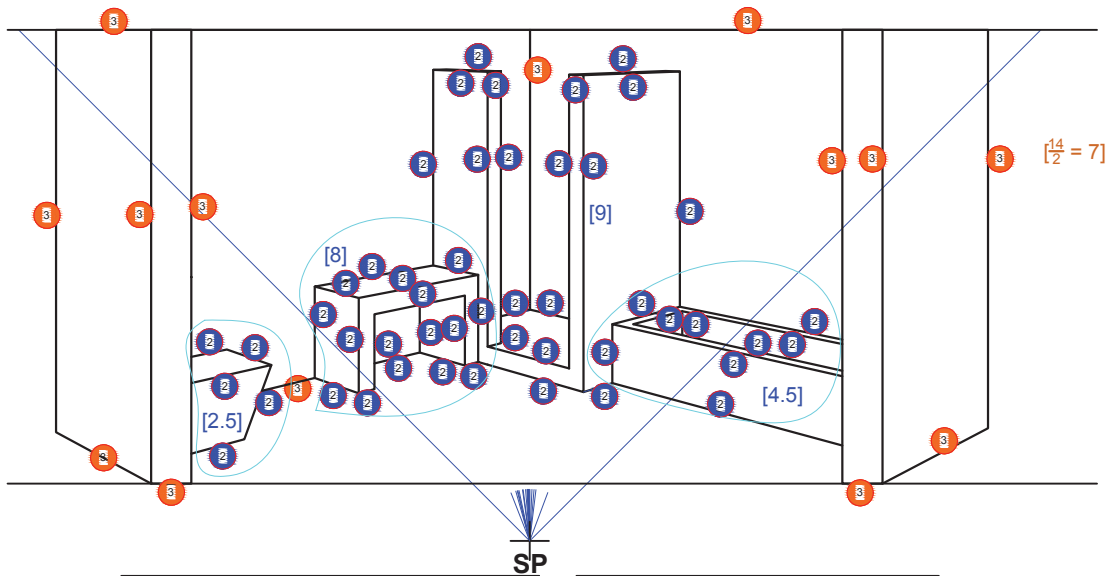
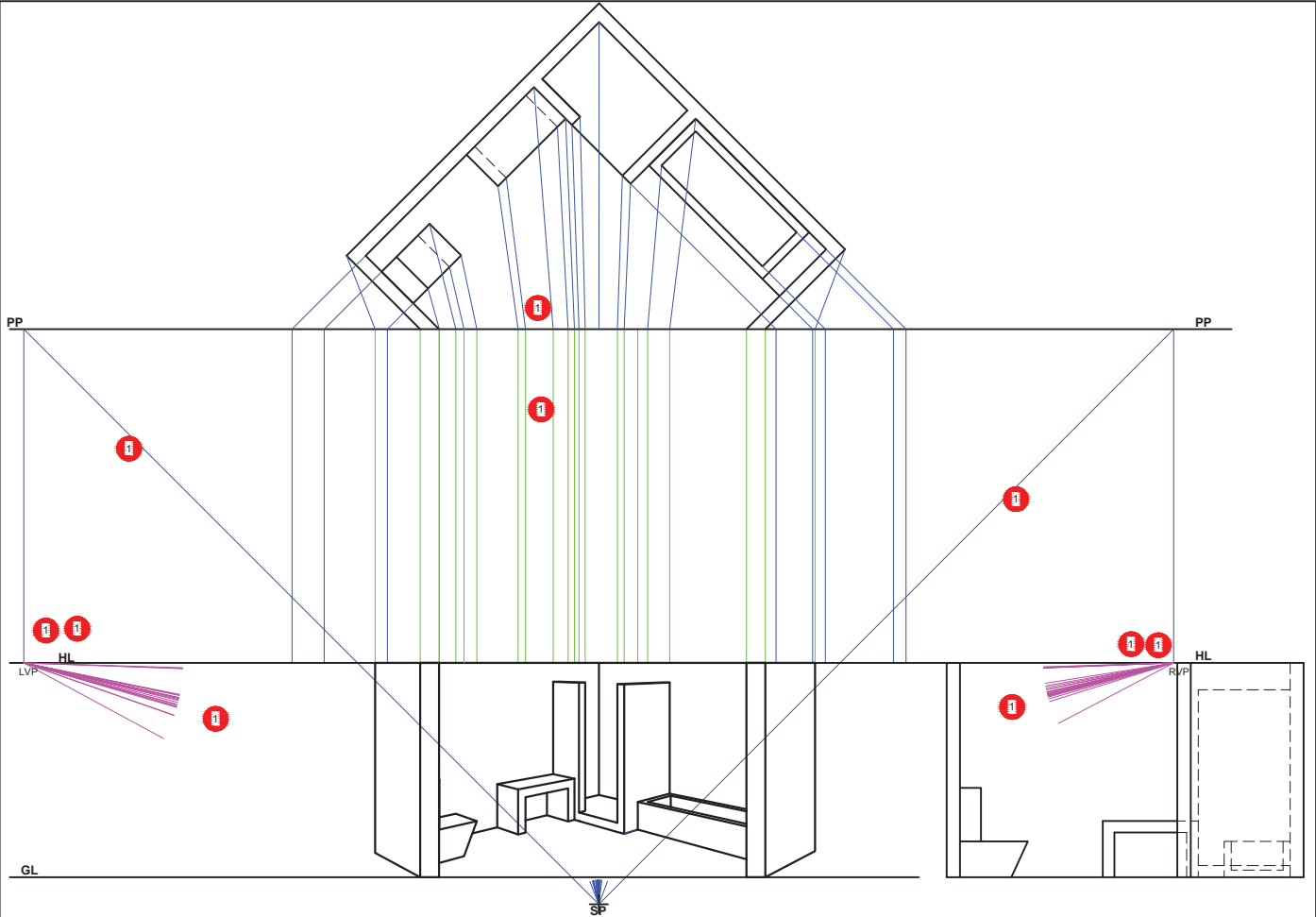
X Y



ASSESSMENT CRITERIA	
1	CONSTRUCTIONS + PLACING 4
2	TOP VIEW 6
3	SEC. FRONT VIEW 19
4	HATCHING 2
5	LEFT VIEW 15
TOTAAL 46	

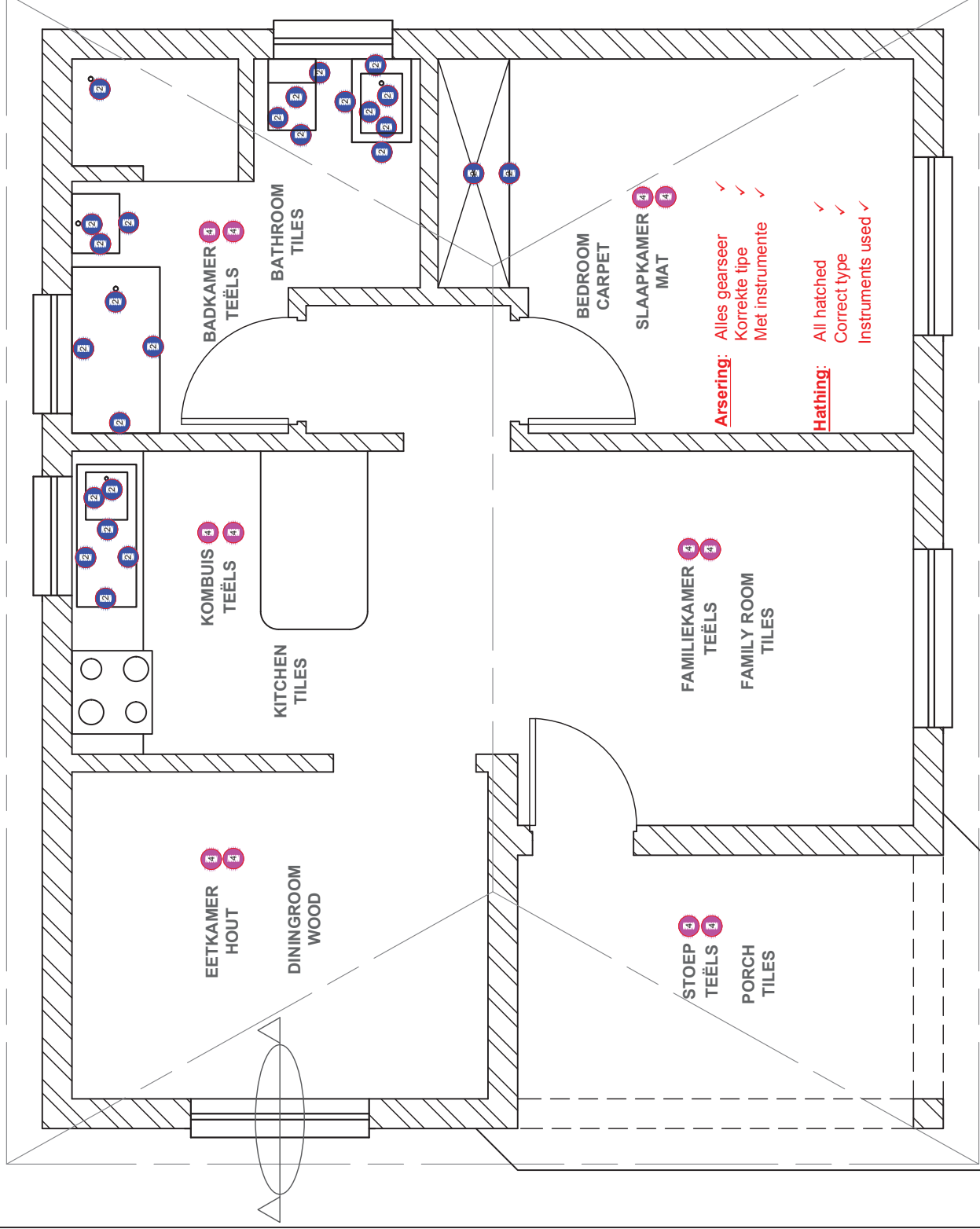
Ⓜ = 5
✓ = 1 Correct placing of cutting plane
= 1 Korrekte plasing van snyvlak

3



ASSESSMENT CRITERIA		
1	CONSTRUCTION + VP's	5
2	FIXTURES	24
3	WALLS	7
TOTAL		36

ASSESSERINGSKRITERIA		
1	KONSTRUKSIE & VPte	5
2	TOEBEHORE	24
3	MURE	7
TOTAL		36

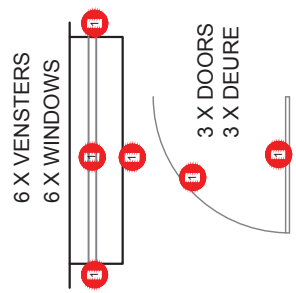


Arsering: Alles gearseer ✓
 Korrekte tipe ✓
 Met instrumente ✓

Hatching: All hatched ✓
 Correct type ✓
 Instruments used ✓

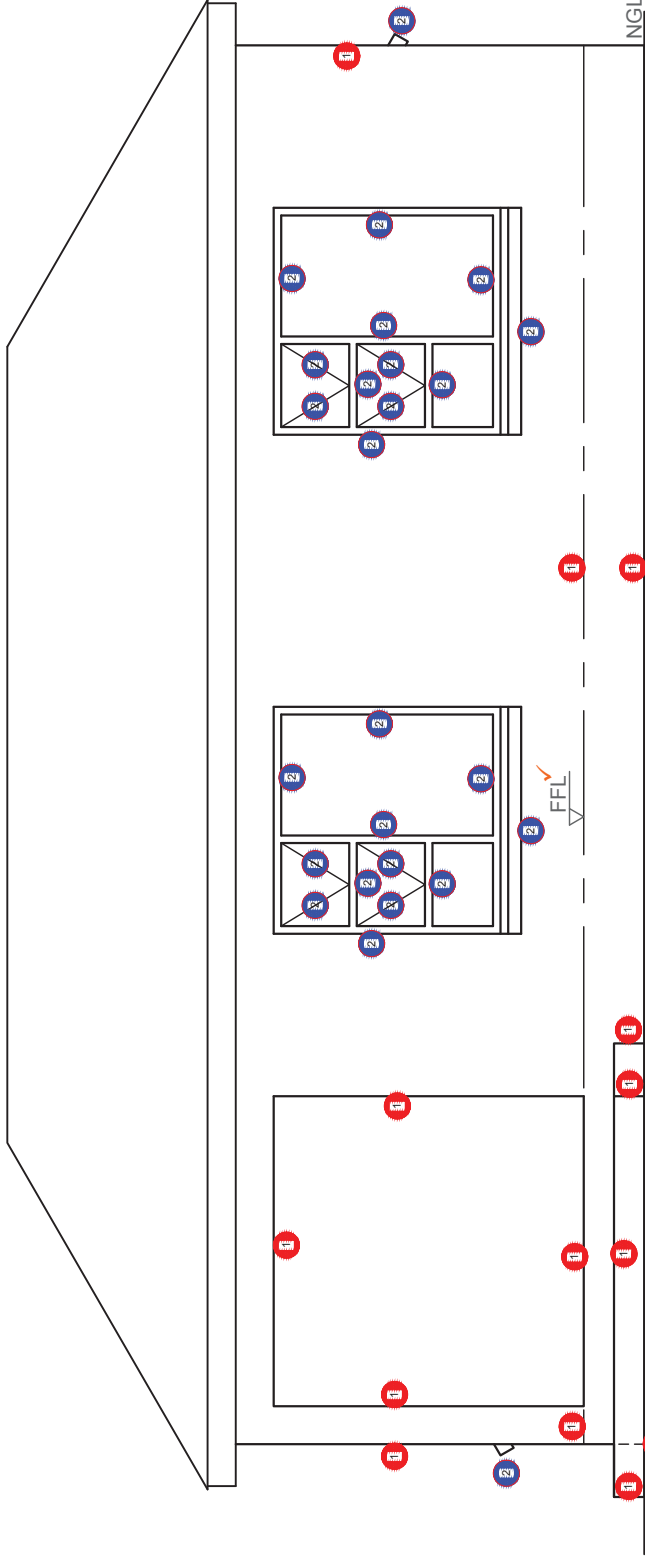
ASSESSMENT CRITERIA	
FLOOR PLAN	
1	DOORS + WINDOWS 15
2	FIXTURES 13
3	HATCHING 3
4	LABELS 6
SUBTOTAL 37	

ASSESSERINGSKRITERIA	
VLOERPLAN	
1	DEURE & VENSTERS 15
2	TOEBEHORE 13
3	ARSERING 3
4	BYSKRIFTE 6
SUB TOTAAL 37	



VLOERPLAN SKAAL 1 : 50

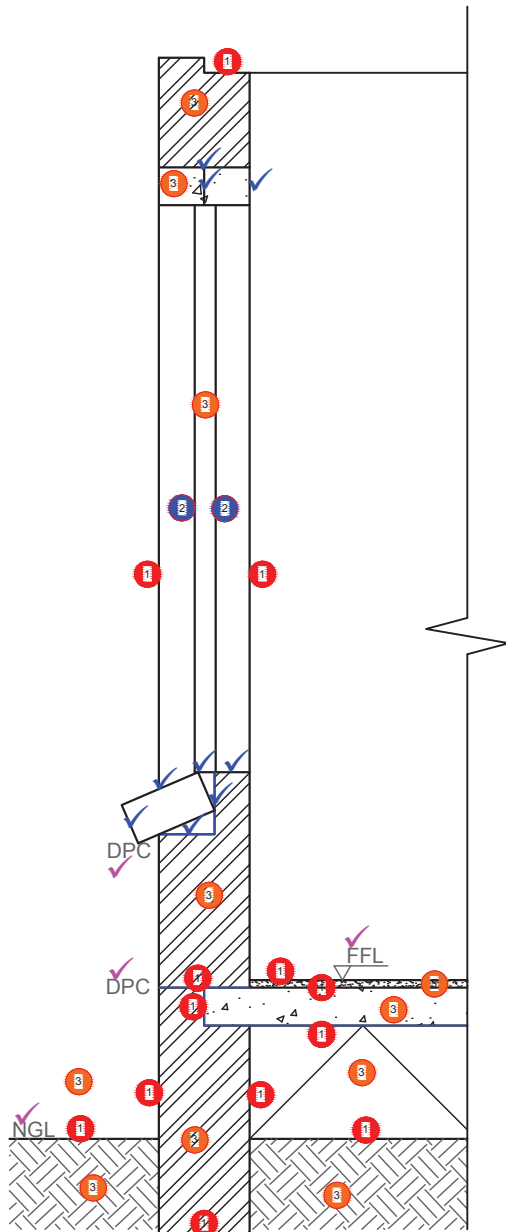
FLOOR PLAN SCALE 1 : 50



WES ELEVASIE WEST ELEVATION ✓
SCALE 1 : 50 SKAAL 1 : 50 ✓

ASSESSMENT CRITERIA	
WEST ELEVATION	
1	WALLS + STEPS + FFL
2	WINDOWS
3	LABELS
SUBTOTAL	
23	

ASSESSERINGSKRITERIA	
WES ELEVASIE	
1	MURE + TRAP + VVV
2	VENSTERS
3	BYSKRIFTE
SUBTOTAL	
23	



BEGINPUNT VIR
GEDETAILEERDE SNIT
STARTING POINT FOR
DETAILED SECTION
GEDETAILEERDE SNIT A-A
SKAAL 1 : 20
DETAILED SECTION A-A
SCALE 1 : 20

ASSESSMENT CRITERIA		
DETAILED SECTION		
1	FOUNDATIONS + WALLS + SLAB	8
2	WINDOW + SILL + LINTEL	10
3	HATCHING	6
4	LABELS	4
SUBTOTAL		28

ASSESSERINGSKRITERIA		
DEURSNEE AANSIG		
1	FONDASIE + MURE + VLOER	8
2	VENSTER + -BANK + LATEI	10
3	ARSERING	6
4	BYSKRIFTE	4
SUBTOTAAL		28