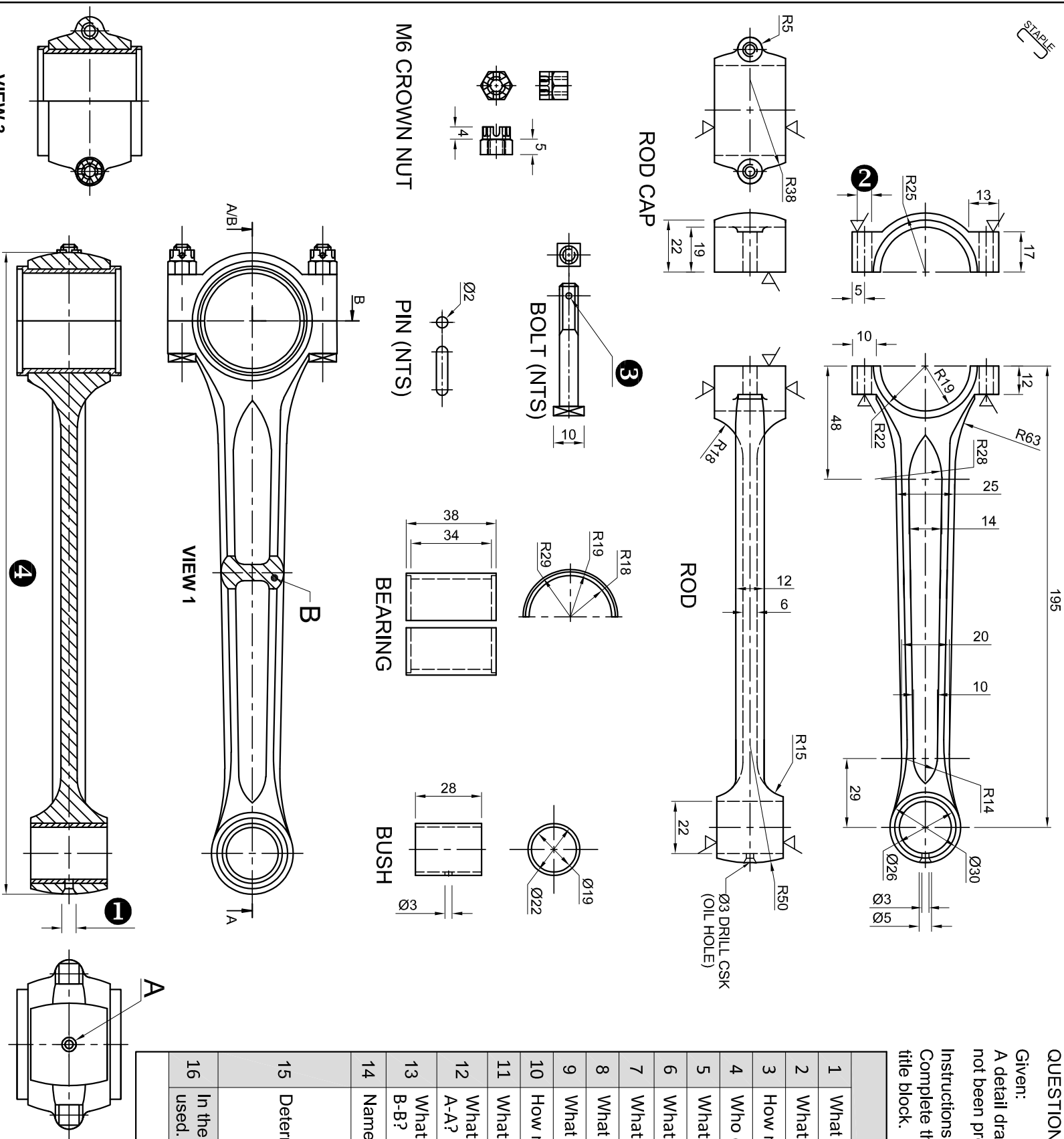


QUESTION 1: ANALYTICAL (MECHANICAL)

Given:
A detail drawing of a connecting rod, a title block, assembled views and a table of questions. The drawings have not been prepared to the indicated scale.

Instructions:
Complete the table below by neatly answering the questions, which all refer to the accompanying drawings and the title block. [29]

QUESTIONS		ANSWERS	
1	What is the name of the manufacturing company?	1	
2	What is the telephone number of the company?	1	
3	How many rods, in total, must be manufactured?	1	
4	Who checked the drawing?	1	
5	What did the draughtsman have to change on the design?	1	
6	What does the abbreviation "CSK" stand for?	1	
7	What is the purpose of the hole at A in VIEW 4?	1	
8	What shape is the head of the bolt?	1	
9	What type of material is used for the BUSH?	1	
10	How many surfaces must be machined?	1	
11	What is VIEW 1 called?	VIEW 1	2
12	What type of section resulted from cutting plane A-A?	VIEW 2	2
13	What type of section resulted from cutting plane B-B?	VIEW 3	2
14	Name the type of section at B.		1
15	Determine the complete dimensions at:	1	2
		2	2
		3	2
		4	2
16	In the space below (Answer 16), draw, in neat freehand, the SANS symbol for the projection system used.	4	
TOTAL		29	



AMATHOLE		21 BUFFALO STREET EAST LONDON 5201 043 7640 488	
ENGINEERING MANUFACTURES			
TITLE:			
CONNECTING ROD			
ALL UNDIMENSIONED RADII ARE R3.		SCALE 1 : 2	
ALL DIMENSIONS ARE MILLIMETRES.			
PROGRAMME: AUTOCAD 2020		FINISH:	
FILE NAME: rod120.dwg		MACHINED 0.05 C	
DRAWING NO.: NCS-20		DRAWN: LOUW	
		CHECKED: REDDY	
		APPROVED: TISHELA	
QUANTITY: 120		6. CROWN NUT	

PARTS LIST		
PART	MATERIAL	QUANTITY
1. ROD	FS	1
2. ROD CAP	FS	1
3. BEARING	GM	1
4. BUSH	BRONZE	1
5. BOLT	MCS	2
6. CROWN NUT	MCS	2

ANSWER 16	
NAME	
NAME	
NAME	
2	