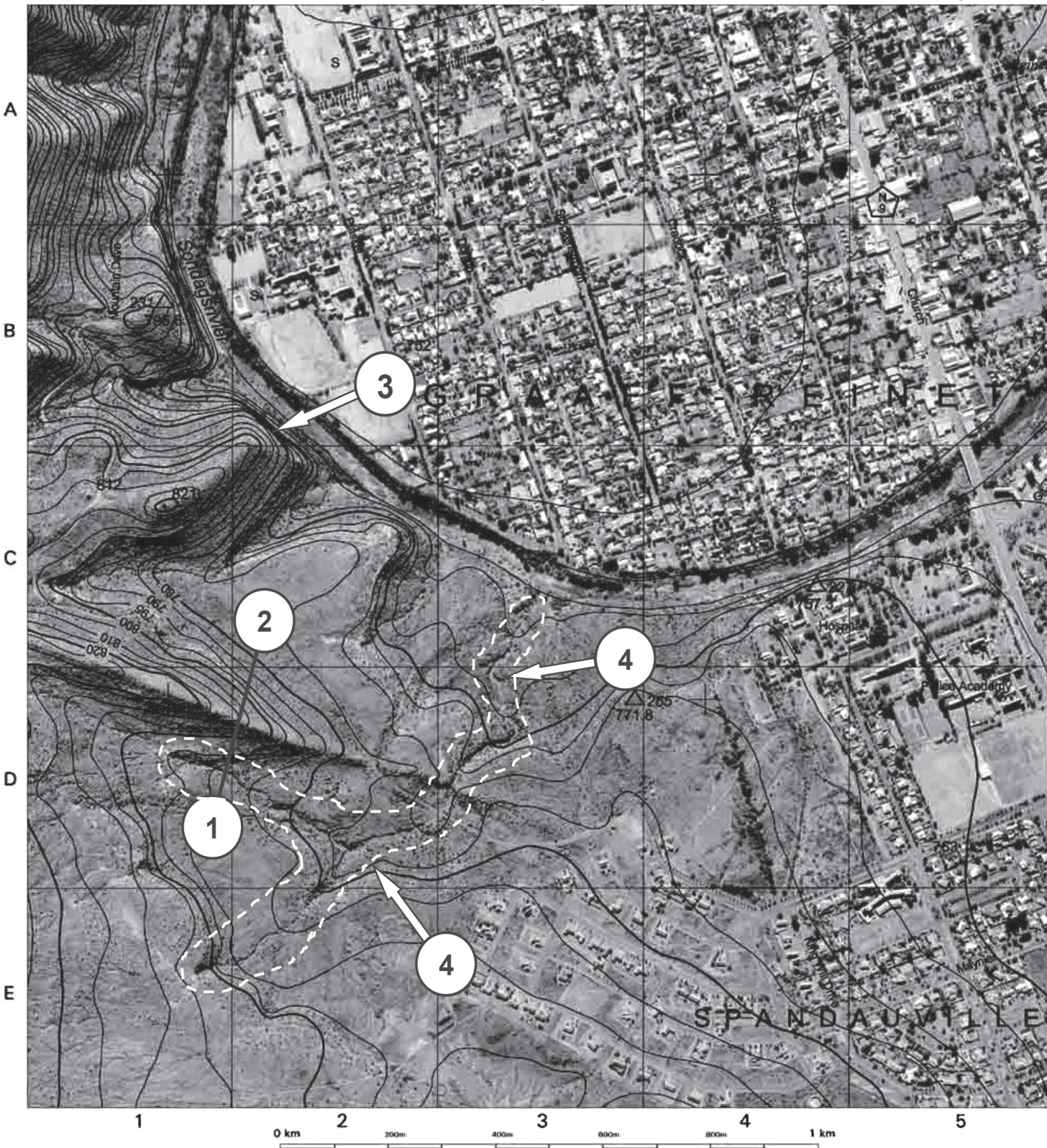


Mean magnetic declination 25°07' West of True North (February 2009).
Mean annual change 7' westwards (Feb. 2009 - Jan. 2010).

REFERENCE

National Freeway; National Route	International Boundary and Beacon	Fence; Wall
Arterial Route	Provincial Boundary	Windpump; Monument
Main Road	Protected Area	Communication Tower
Secondary Road; Bench Mark	Perennial River	Mine Dump; Excavation
Other Road; Bridge	Perennial Water	Trigonometrical Station; Marine Beacon
Track and Hiking Trail	Non-perennial River	Lighthouse and Marine Light
Railway; Station or Siding	Non-Perennial Water	Cemetery; Grave
Other Railway; Tunnel	Dry Water Course	Erosion; Sand
Embankment; Cutting	Dry Pan	Woodland
Power Line	Marsh and Vlet	Cultivated Land
Built-up Area (High, Low Density)	Pipeline (above ground)	Orchard or Vineyard
Buildings; Ruin	Water Tower; Reservoir; Water Point	Recreation Ground
Post Office; Police Station; Store	Coastal Rocks	Row of Trees
Place of Worship; School; Hotel	Prominent Rock Outcrop	Original Farms



1:10000 KONTOERTUSSENRUIMTE 5 METER

VERKLARING

Nasionale Deurpad; Nasionale Roete	Internasionale Grens en Baken	Draadheining; Muur
Hoofverkeersroete	Provinsiale Grens	Windpomp; Monument
Hoofpad	Bewarings Gebied	Kommunikasietoring
Sekondêre Pad; Hoogtemerk	Standhoudende Rivier	Mynhoop; Uitgraving
Ander Pad; Brug	Standhoudende Water	Peilbaken; Seevaartbaken
Dowwe Pad en Voetslaanpad	Nie-standhoudende Rivier	Vuurtoring en Seevaartlig
Spoorweg; Stasie of Sylyn	Nie-standhoudende Water	Begraafplaas; Graf
Ander Spoorweg; Tonnél	Droë Loop	Erosie; Sand
Opvulling; Deurgrawing	Droë Pan	Beboste Gebied
Kraglyn	Moeras en Vlei	Bewerkte Land
Beboude Gebied (Hoë, Laë Digtheid)	Pylyyn (bo die grond)	Boord of Wingerd
Geboue; Murasie	Watertoring; Reservoir; Waterpunt	Ontspanningsterrein
Poskantoor; Polisiestasie; Winkel	Kuslynroete	Rye Bome
Plek van Aanbidding; Skool; Hotel	Prominente Klipbank	Oorspronklike Plase