



Province of the  
**EASTERN CAPE**  
EDUCATION

Iphondo leMpuma Kapa: Isebe leMfundo  
Provinsie van die Oos Kaap: Departement van Onderwys  
Porafensie Ya Kapa Botjhabela: Lefapha la Thuto

## **CHIEF DIRECTORATE: EXAMINATIONS AND ASSESSMENT**

Steve Vukile Tshwete Complex, Zone 6 Zwelitsha, 5608, Private Bag X0032, Bhisho, 5605 REPUBLIC OF SOUTH AFRICA:

Enquiries: **Mrs P. Japtha** Tel: 040 602 7031 . Fax : 040 608 7026. E-mail: [Penny.Japtha@ecdoe.gov.za](mailto:Penny.Japtha@ecdoe.gov.za)

Website: [www.ecdoe.gov.za](http://www.ecdoe.gov.za)

**TO: DISTRICT HEADS OF EXAMINATIONS  
PRINCIPALS OF SCHOOLS IN THE FET BAND**

**FROM: (A) CES: ASSESSMENT INSTRUMENT DEVELOPMENT AND ITEM  
BANK MANAGEMENT  
MRS P. JAPHTA**

**SUBJECT: ERRATA – ENGINEERING GRAPHICS AND DESIGN P2,  
10 SEPTEMBER 2024**

**DATE: 12 SEPTEMBER 2024**

### **ERRATA: ENGINEERING GRAPHICS AND DESIGN P2 (MARKING GUIDELINE)**

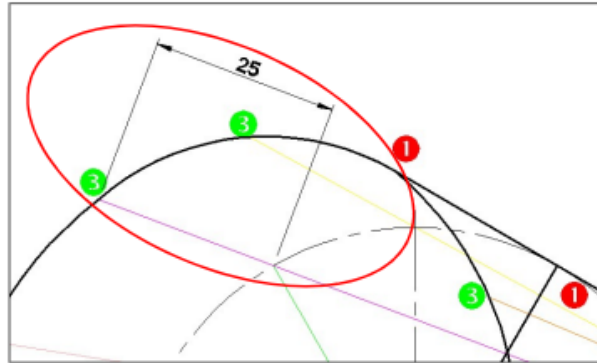
The Engineering Graphics and Design Paper 2 was administered on the 10th of September 2024. Following a moderation discussion on the 11th of September 2024, it was identified that certain marking guidelines contained measurement deviations. It is important to note that these deviations did not negatively impact the candidates, as they occurred solely within the marking guidelines. This amendment, prepared in collaboration with the Examiner and Moderator, addresses the identified discrepancies in the marking guidelines. It ensures that candidates are not unfairly disadvantaged by these deviations. The standardized corrections outlined in this amendment must be implemented across the province to maintain fairness and consistency in the evaluation process.

### Question 2.1 (Mechanisms):

The question in reference was deemed fair, and the deviation identified did not adversely impact the candidates. The specified measurement from point A to -P on the slotted link should be 25 mm, as clearly indicated in the question paper.

However, it has been observed that this measurement is incorrectly represented in the current marking guidelines.

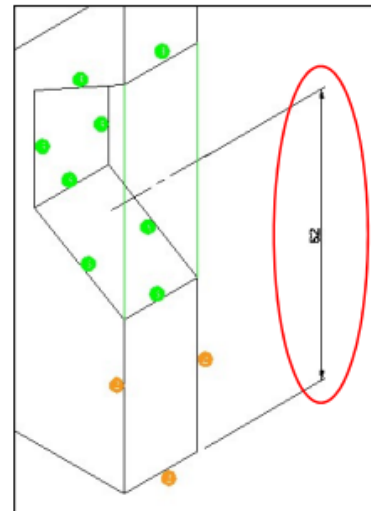
Attached is the revised marking guideline, reflecting the correct measurement (page 3).



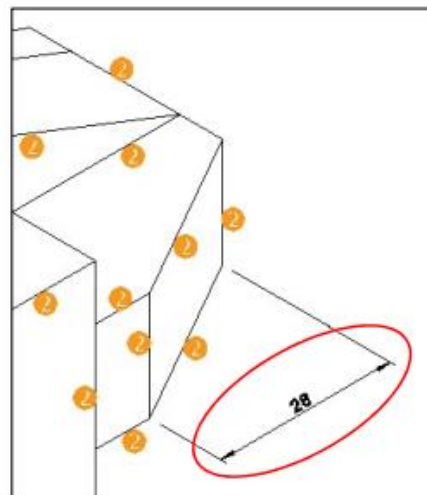
### Question 3 (Isometric):

The question was determined to be fair, and the deviations identified did not have a significant impact on the candidates' performance. However, there are three deviations in the marking guideline that require adjustments to ensure accuracy and consistency with the question paper.

1. Deviation in measurement of the midpoint of the half hexagon. The length must be adjusted to 62 mm, as specified in the question paper.



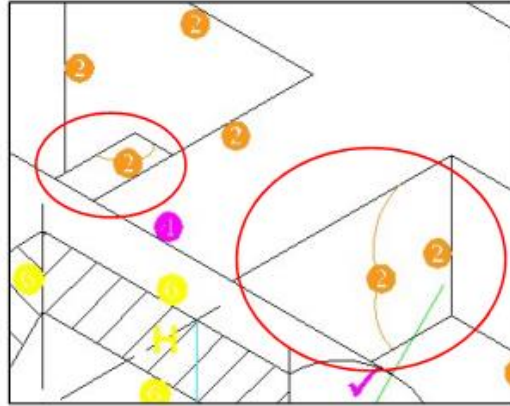
2. Deviation in the length of the half hexagon at the back of the figure. The correct measurement, as stated in the question paper, is 28 mm.



3. Omission of a corner in the marking guideline. A corner that is present in the figure is not represented in the marking guideline.

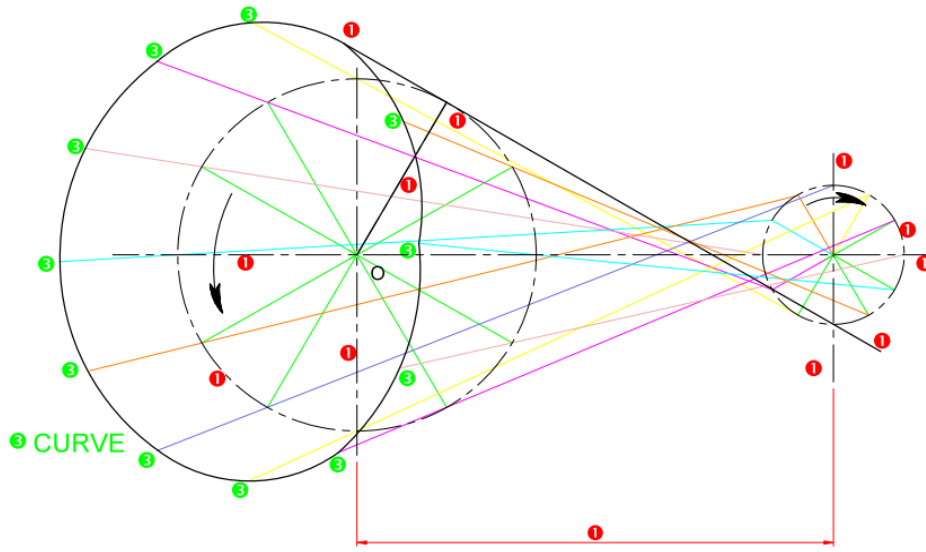
The following adjustments should be applied:

- Allocate half a mark for the inclusion of the corner.
- Allocate half a mark for the two front lines of the web connecting the base to the bracket.



Attached is the revised marking guideline, reflecting the correct measurements (page 4).

**QUESTION 2.1: LOCI (MECHANISM)**



③ CURVE

2. CONSTRUCTION OF DIAGRAM

- CIRCLE DIVISIONS 2
- CONSTRUCTIONS AC 2
- CURVE QUALITY 2

TOTAL 6

ASSESSMENT CRITERIA		
1	GIVEN	6
2	CONSTRUCTION OF DIAGRAM	6
3	CONSTRUCTION OF LOCI	6
<b>TOTAL</b>		<b>18</b>

3

**QUESTION 3: ISOMETRIC**

The diagram shows an isometric drawing of a complex object with various features. Two orthographic views are provided: a top view (left) and a front view (right). The top view shows a diamond-like shape with a central circular feature and a rectangular extension. The front view shows a complex profile with a semi-circular top and a rectangular base. The isometric drawing is annotated with numbers 1 through 19, corresponding to the assessment criteria table. A north arrow is located at the bottom left of the drawing area.

ASSESSMENT CRITERIA	
1	CONSTR + PLACEMENT
2	ISO + NON ISO LINES
3	HALF-HEXAGON
4	HALF-CIRCLE + CUS
5	SQUARE
6	SECTION AAA
<b>TOTAL</b>	<b>40</b>

Copyright reserved

Please turn over

5

We request that this must be brought to the attention of all educators marking this paper and sincerely apologise for the inconvenience.

Yours in quality education.

Mrs P. E. Japhta

13 September 2024  
DATE